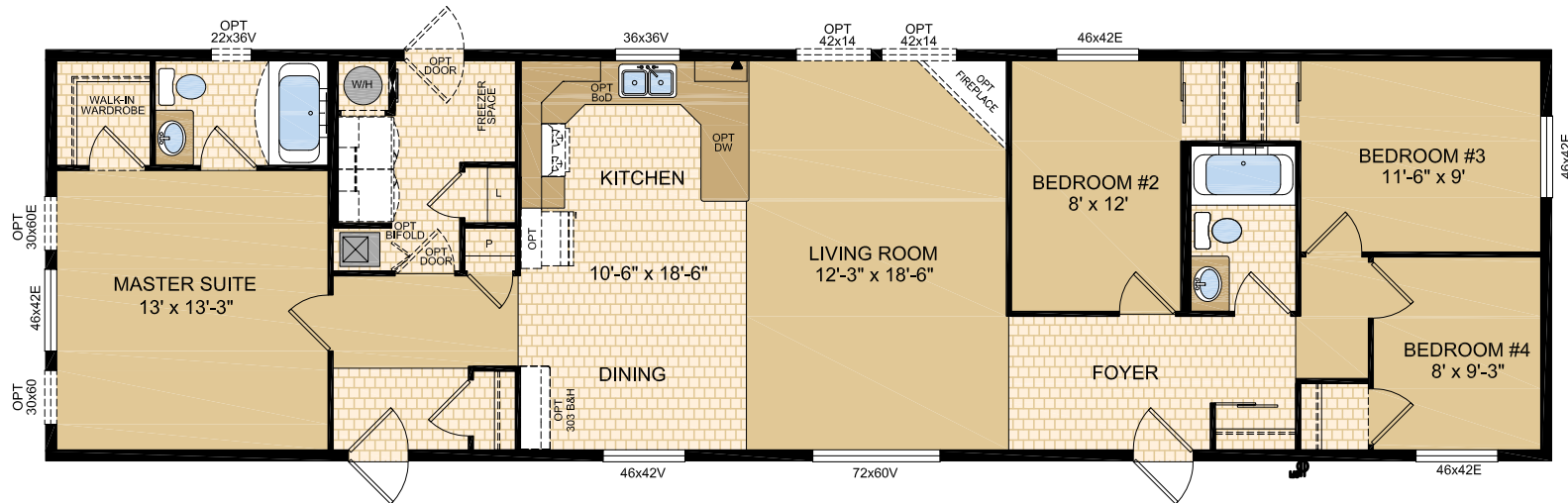


Lauderdale - 20111

20' x 72', 1440 sq. ft.

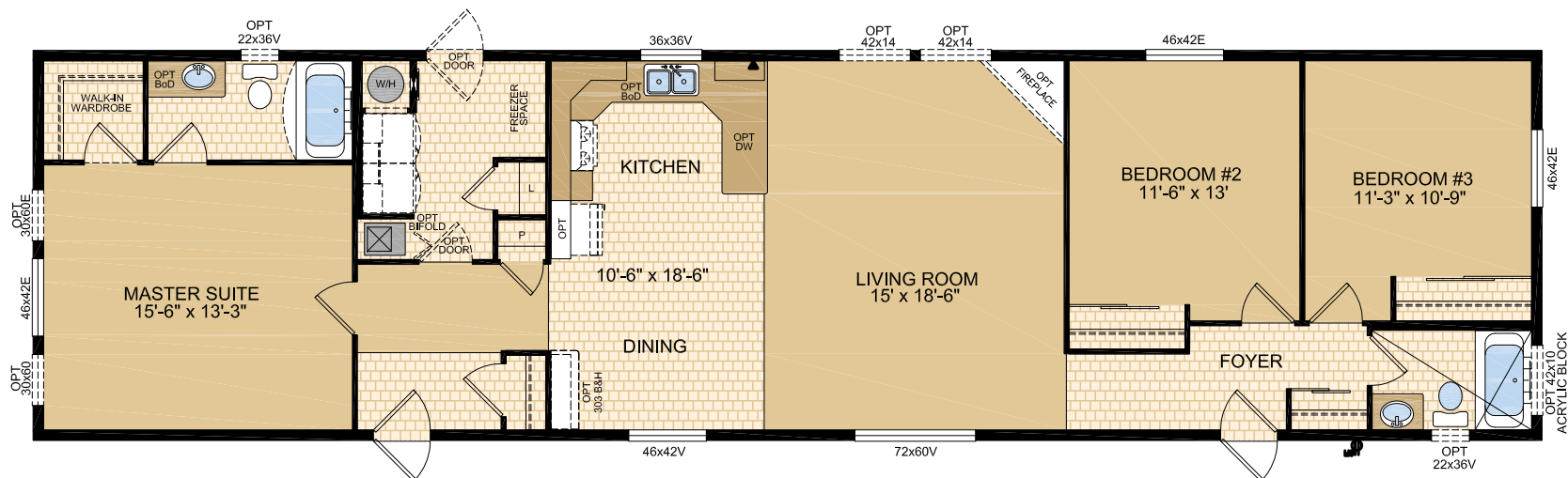
4 Bedrooms 2 Baths



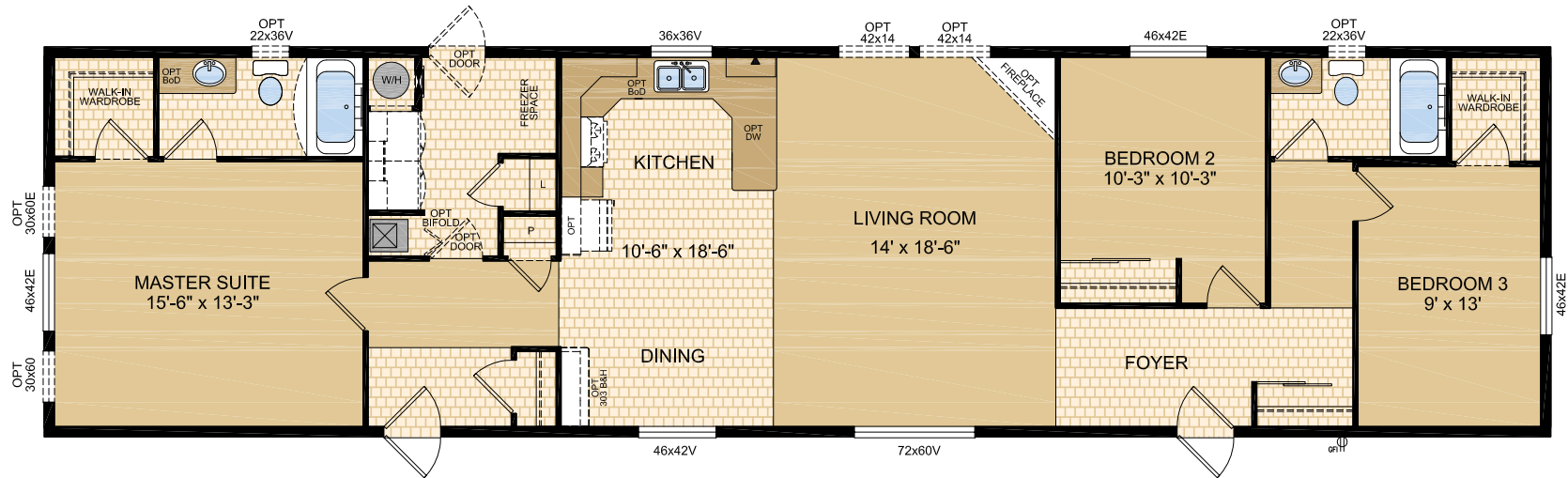
Nashville - 20112

20' x 76', 1520 sq. ft.

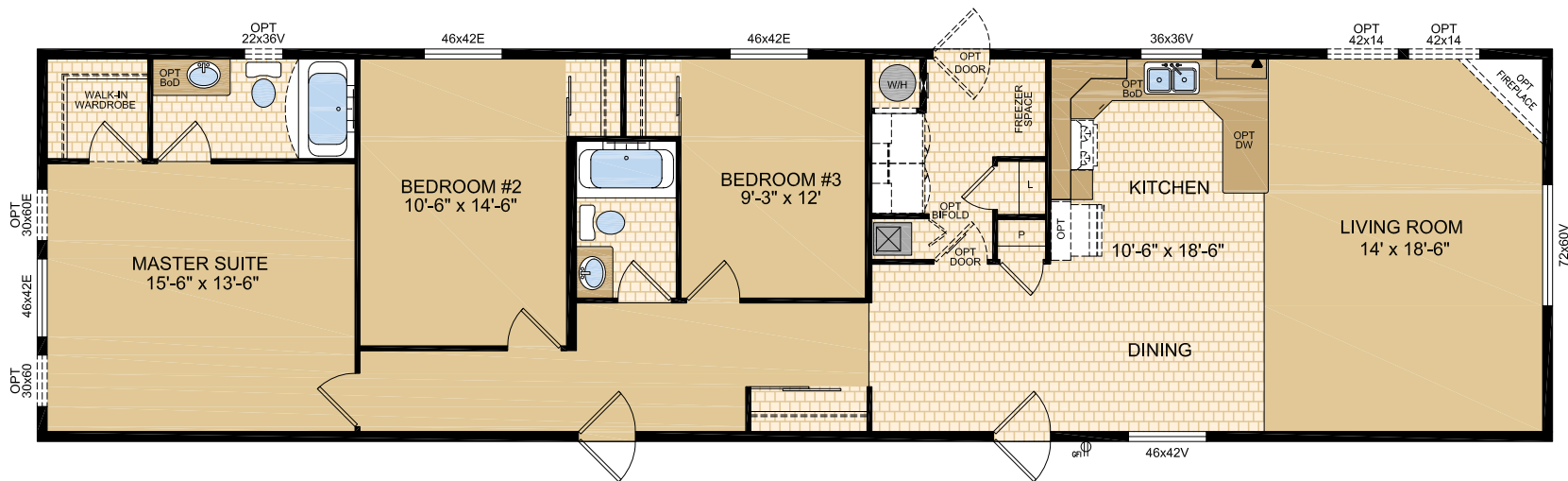
3 Bedrooms 2 Baths



3 Bedrooms 2 Baths



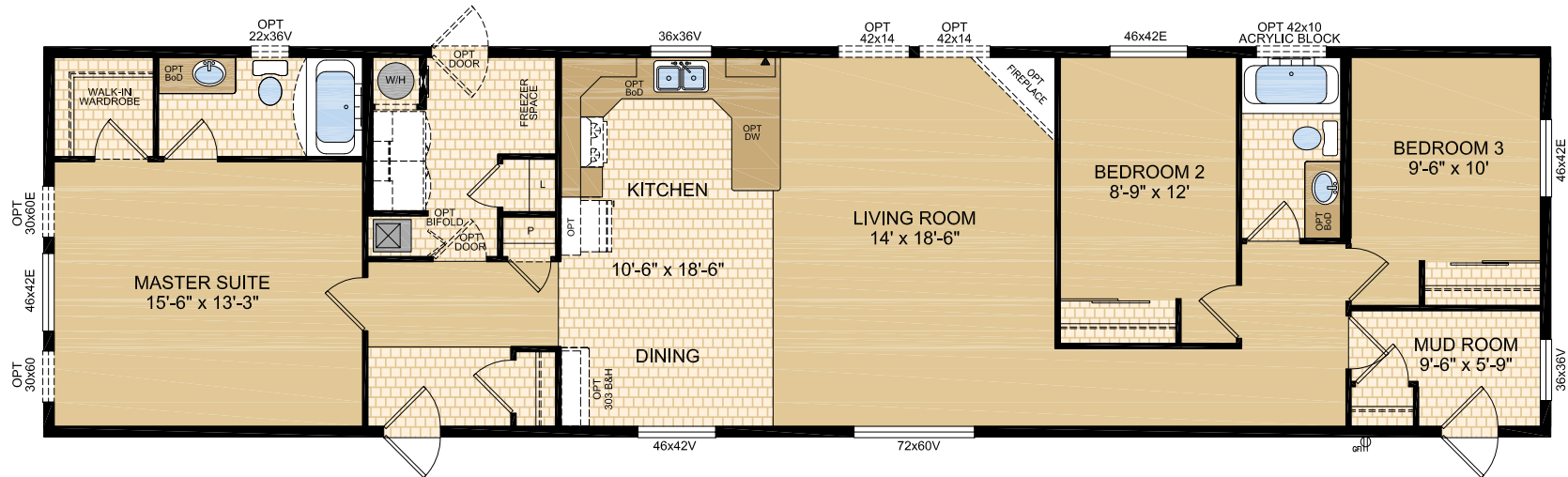
3 Bedrooms 2 Baths



Olympia - 20115

20' x 76', 1520 sq. ft.

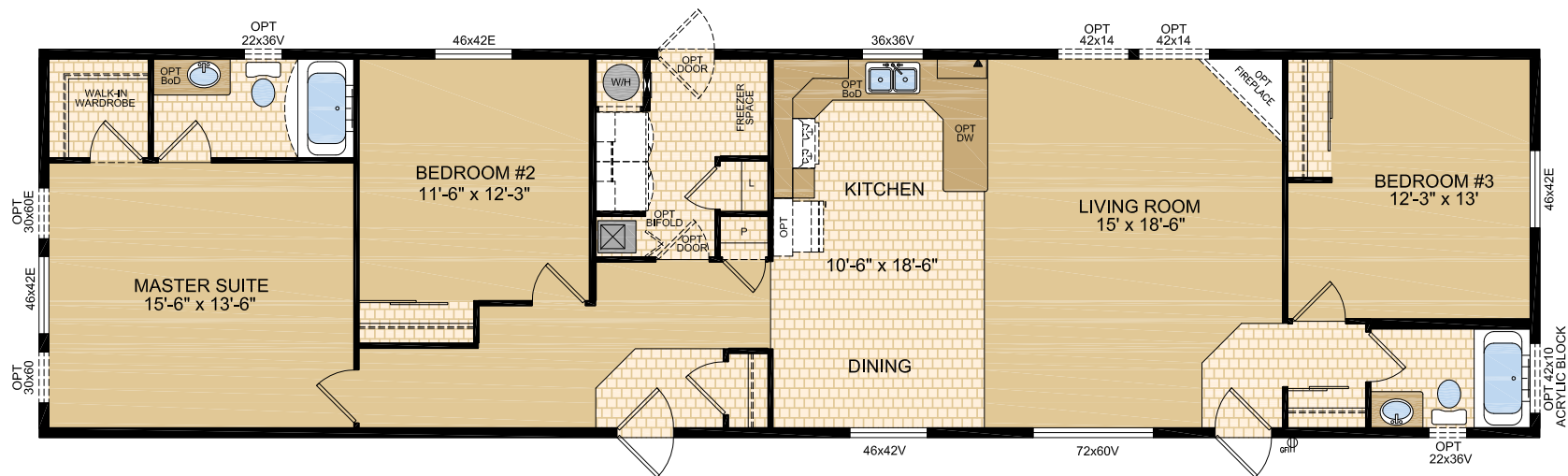
3 Bedrooms 2 Baths

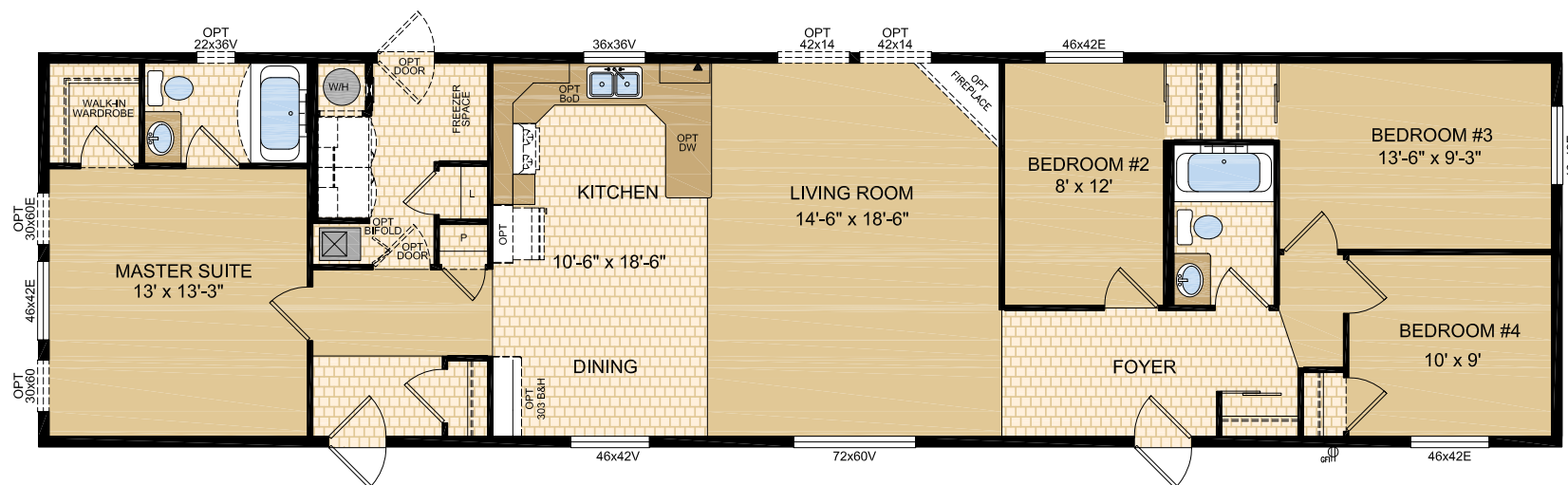


Nassau - 20116

20' x 76', 1520 sq. ft.

3 Bedrooms 2 Baths





STANDARD FEATURES & SPECIFICATIONS

GENERAL CONSTRUCTION

- 8' Flat Ceilings
- Wood siding
- Maintenance free metal fascia
- Fiberglass shingle roof (25 year)
- 7/16" roof sheathing
- Engineered full 4-12 pitch roof trusses
- Perimeter vented eaves
- Textured (primed) gyproc ceilings
- 2"x6" Exterior walls @ 16" o.c. with triple belt rail system
- Covered gyproc throughout
- 5/8" T & G OSB Floor Decking glued and screwed
- Heavy tubular steel frame
- 2"x10" Floor joists @ 16" o.c. (16' & 20' wides)
- Decorative insulated 32" entry doors with dead bolt and peephole
- Coach lights at all exterior entrances
- Screen doors on front and rear entrances
- Residential maintenance free Low E PVC windows, screens and security locks
- Exterior GFI electrical outlet
- Insulation meets or exceeds codes Floors R-20, Walls R-20 & Ceiling R-40 (min)
- *Insulation plus package is a forced option on all BC homes

TASTEFUL INTERIORS

- Plush Saxony carpet in Living Room, all bedrooms, and hallways in 20' wides (lino in hallways of 14' & 16' wides)
- Quality cushioned linoleum flooring all other areas

- Switched receptacles in bedrooms
- Pre-finished interior passage doors

BRIGHT, BEAUTIFUL KITCHENS

- Range hood with light
- Double stainless steel sink
- Doweled, full modular cabinetry
- Ranch style cabinet doors
- Window over kitchen sink (most models)
- Peninsula Kitchen (20' wides only)

SPACIOUS BATHS

- One-piece quality fiberglass tub and shower units
- Single lever faucet on tub/shower unit
- Expansive vanity mirrors
- GFI receptacle
- Exhaust fan(s)

UTILITY SERVICES

- 100 amp electrical panel
- High efficiency (90+AFUE) gas furnace with condensation pump
- 33 Imp. (40US) gallon electric water heater
- Primary exhaust fan c/w dehumidistat
- CO/Smoke Detector(s) c/w battery backup
- Dedicated GFI breaker and receptacle for heat tape
- Wired, plumbed and vented for washer and dryer
- Communication outlet