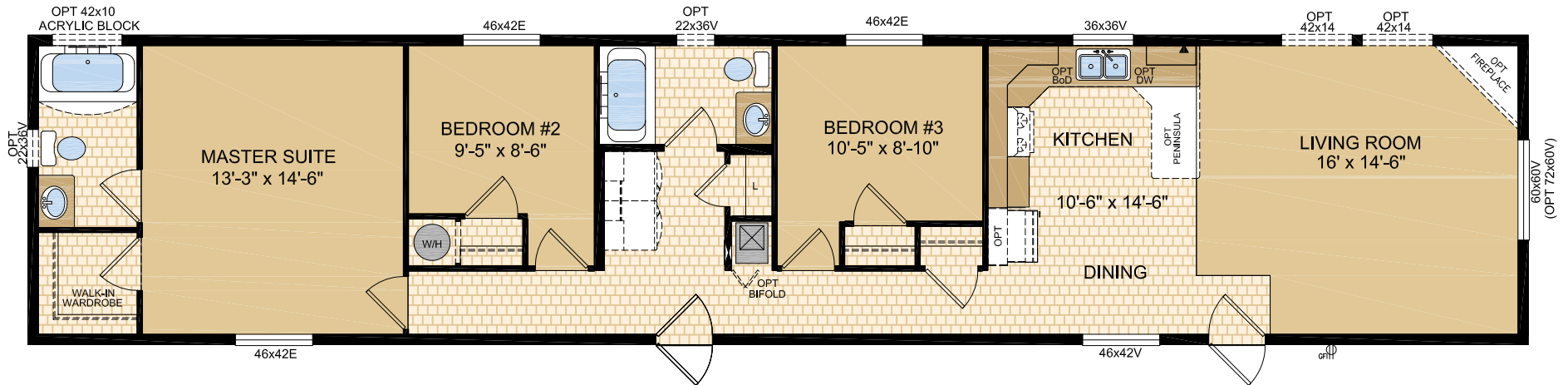


# Jamestown- 16401

16' x 76', 1216 sq. ft.

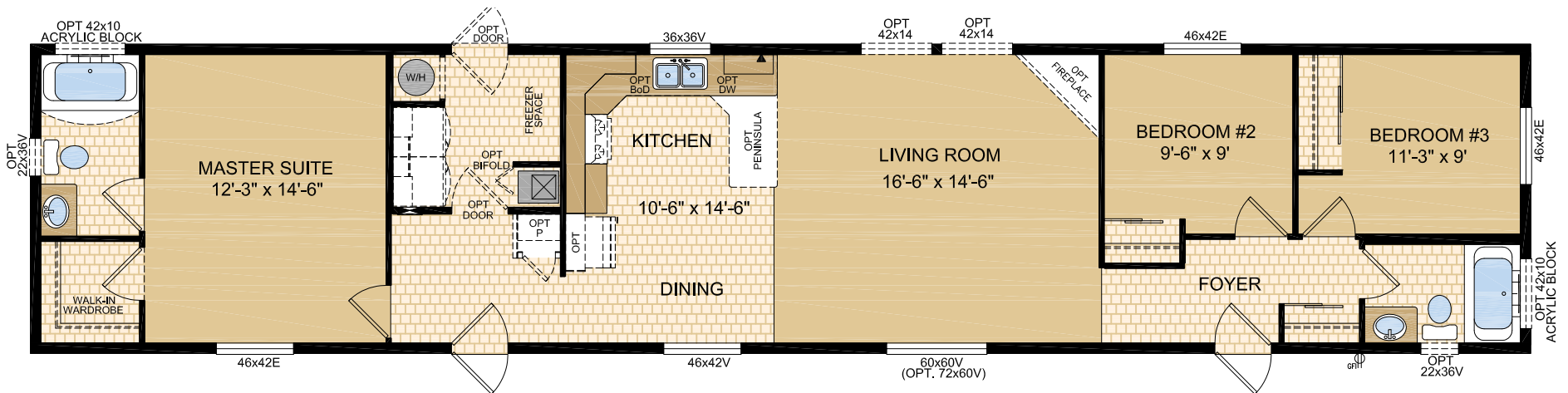
3 Bedrooms 2 Baths



# Kalimore - 16405

16' x 76', 1216 sq. ft.

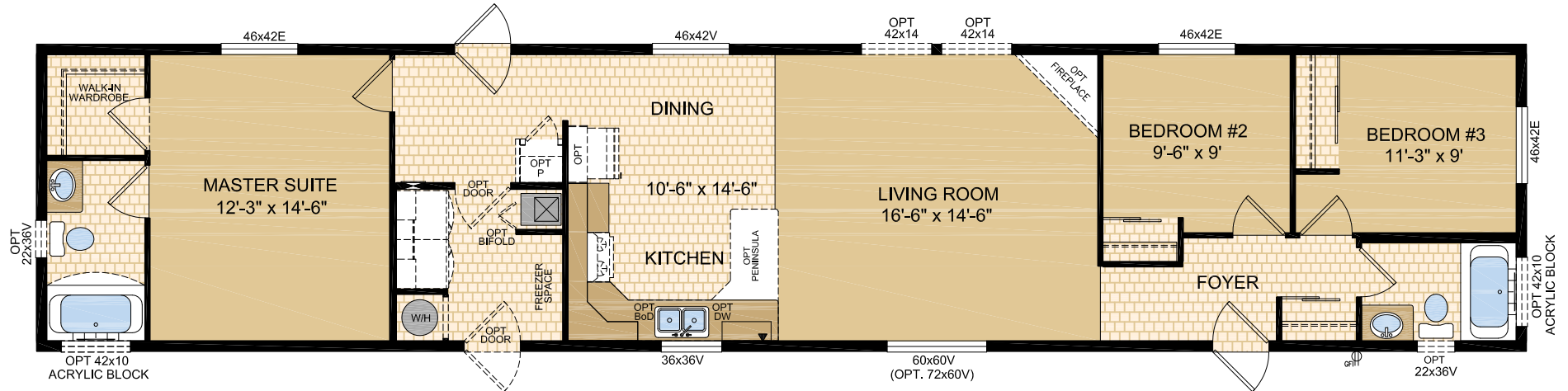
3 Bedrooms 2 Baths



## Victoria - 16406

16' x 76', 1216 sq. ft.

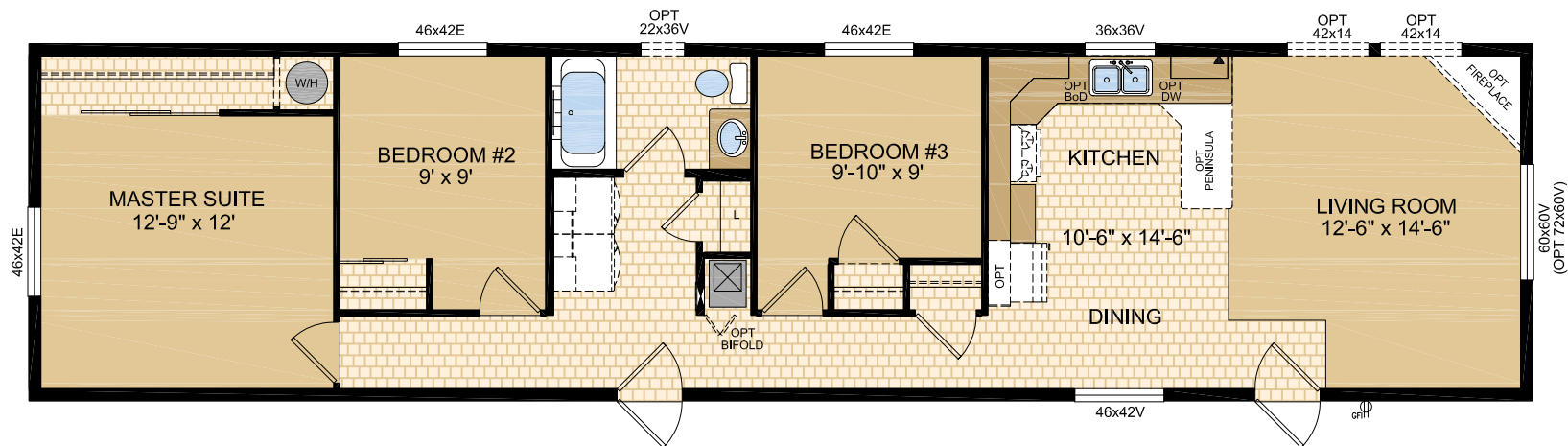
3 Bedrooms 2 Baths



## Inverness - 16411

16' x 66', 1056 sq. ft.

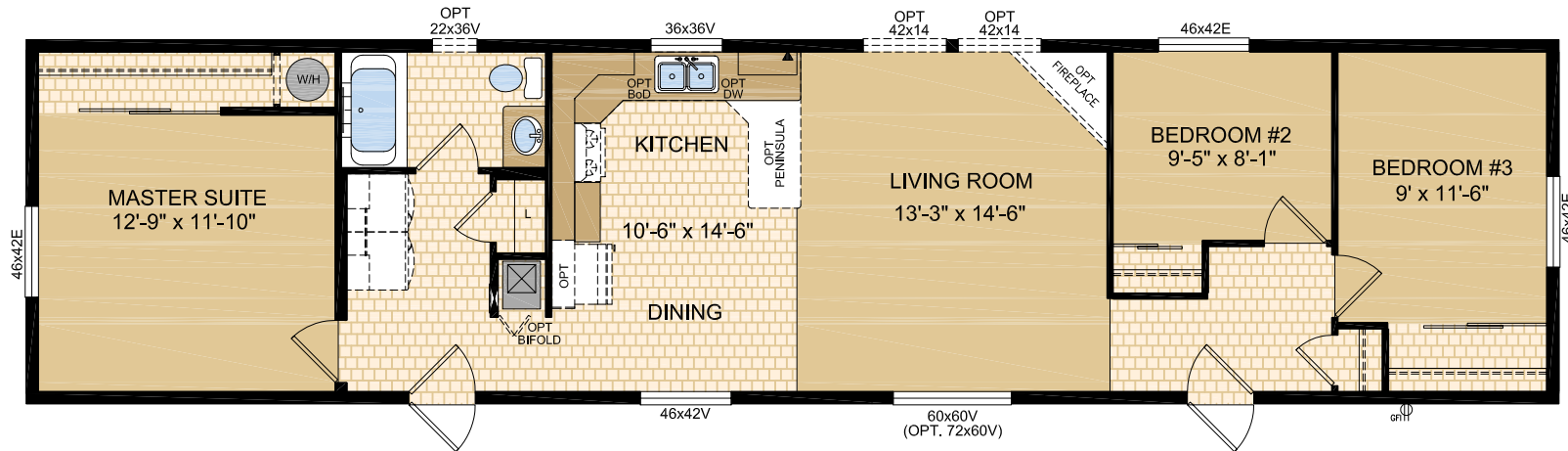
3 Bedrooms 1 Bath



### Jackson - 16412

16' x 66', 1056 sq. ft.

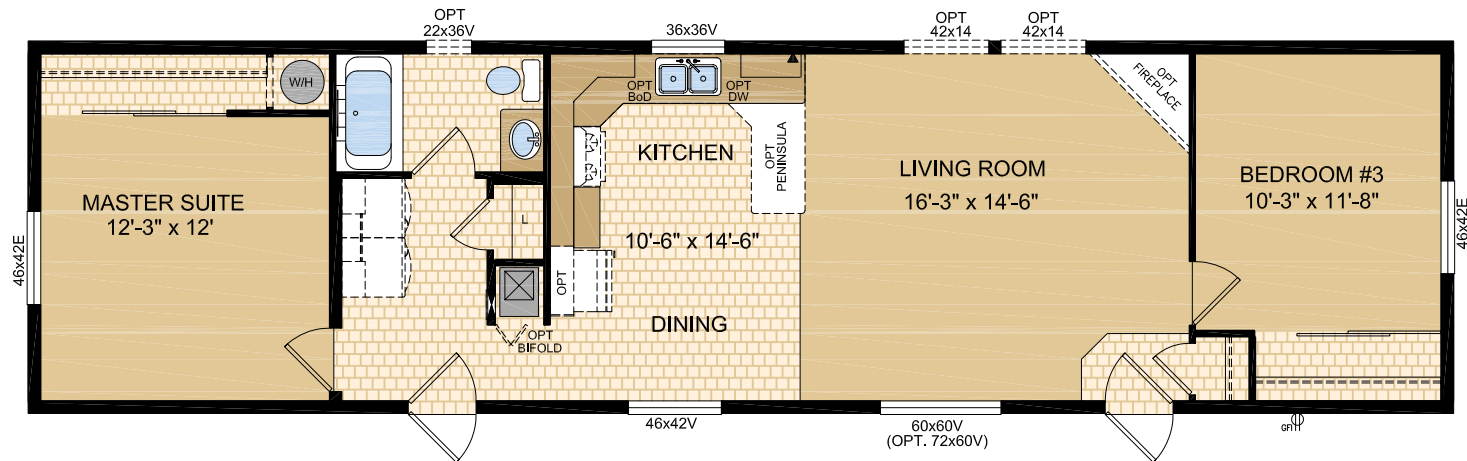
3 Bedrooms 1 Bath



### Kelowna - 16422

16' x 60', 960 sq. ft.

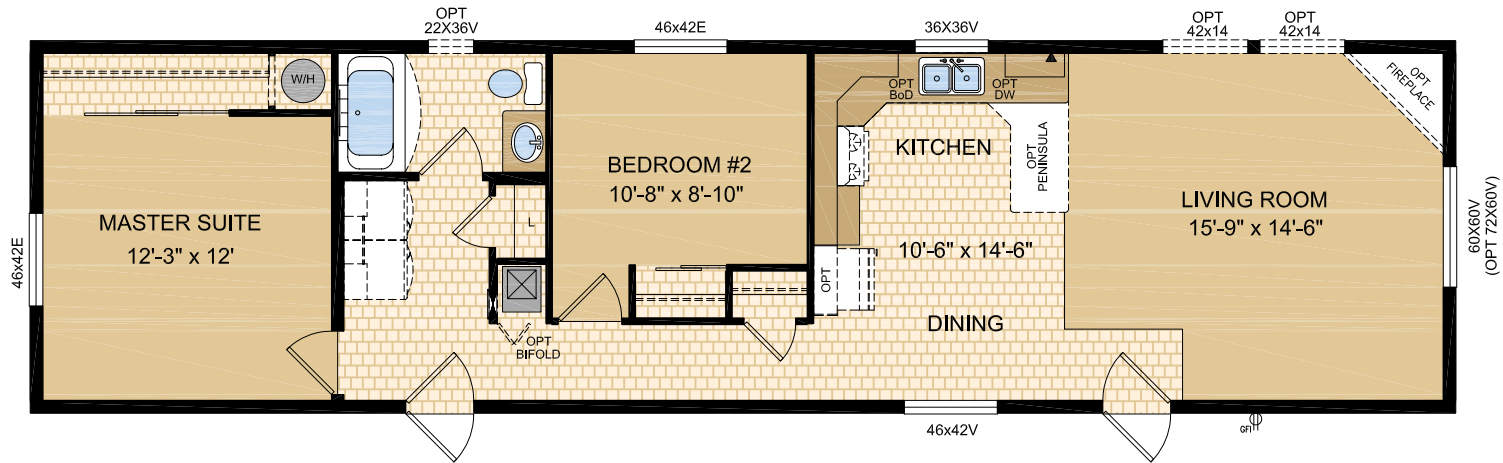
2 Bedrooms 1 Bath



### Innsbruck - 16423

16' x 60', 960 sq. ft.

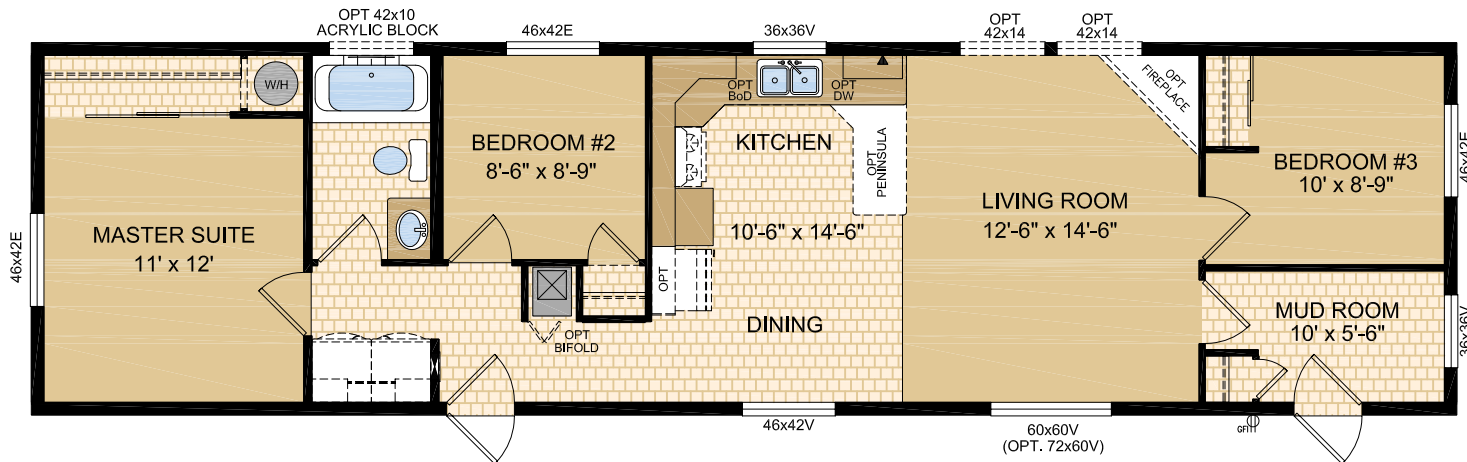
2 Bedrooms 1 Bath



### Jamacia - 16426

16' x 60', 960 sq. ft.

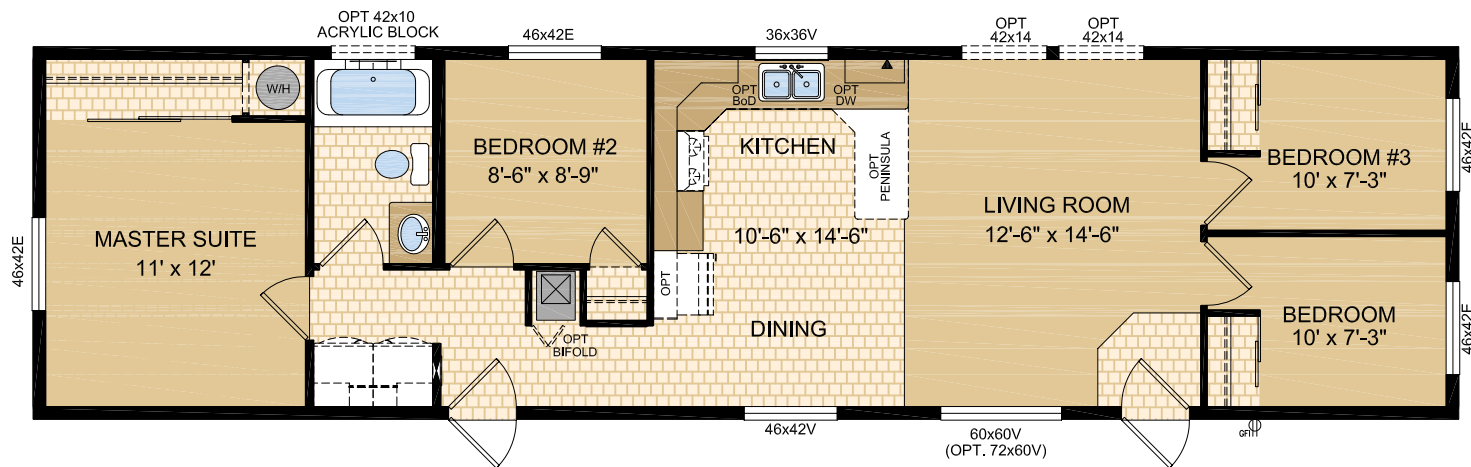
3 Bedrooms 1 Bath Mudroom



# Kampala - 16427

16' x 60', 960 sq. ft.

4 Bedrooms 1 Bath



**GENERAL CONSTRUCTION**

- 8' Flat Ceilings
- Maintenance free vinyl lap siding and metal fascia
- Fiberglass shingle roof (25 year)
- 7/16" roof sheathing
- Engineered full 4-12 pitch roof trusses
- 18" front vented eaves (no side or rear eaves)
- Textured (primed) gyproc ceilings
- Exterior walls built 2"x6" @ 16" o.c. strengthened with 3/8" OSB sheathing on inside and outside of wall
- Covered gyproc throughout
- 5/8" T & G OSB Floor Decking glued and screwed
- Heavy tubular steel frame
- 2"x10" Floor joists @ 16" o.c. (16' & 20' wides)
- Decorative insulated 32" entry doors with dead bolt and peephole
- Coach lights at all exterior entrances
- Screen doors on front and rear entrances
- Residential maintenance free Low E PVC windows, screens and security locks
- Exterior GFI electrical outlet
- Insulation meets or exceeds codes Floors R-20, Walls R-20 & Ceiling R-40 (min)
- \*Insulation plus package is a forced option on all BC homes

**TASTEFUL INTERIORS**

- Plush Saxony carpet in Living Room, all bedrooms, and hallways in 20' wides (lino in hallways of 16' wides)

- Quality cushioned linoleum flooring all other areas
- Switched receptacles in bedrooms
- Pre-finished interior passage doors

**BRIGHT, BEAUTIFUL KITCHENS**

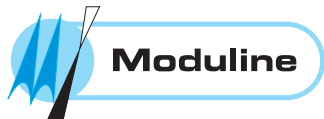
- Exterior vented range hood with light
- Double stainless steel sink
- Doweled, full modular cabinetry
- Flat PVC natural apple cabinet doors
- Window over kitchen sink (most models)
- Peninsula Kitchen (20' wides only)

**SPACIOUS BATHS**

- One-piece quality fiberglass tub and shower units
- Single lever faucet on tub/shower unit
- Expansive vanity mirrors
- GFI receptacle
- Exhaust fan(s)

**UTILITY SERVICES**

- 100 amp electrical panel
- High efficiency (95.1+AFUE) gas furnace with condensation pump
- 33 Imp. (40US) gallon electric water heater
- Primary exhaust fan c/w dehumidistat & switch
- CO/Smoke Detector(s) c/w battery backup
- GFI protected receptacle for heat tape
- Wired, plumbed and vented for washer and dryer
- Communication outlet

**NO CUSTOM CHANGES****DECORS ARE SUBJECT TO CHANGE WITHOUT NOTICE**

10 Year Warranty

September 2011

**1421 Brier Park Crescent, Medicine Hat, Alberta T1C 1T8 Phone: (403) 527-1555 Fax: (403) 528-4486**

*In a continued effort to meet the challenges of product improvement, we reserve the right to modify plans, specifications and features without prior notice. Some homes may show optional items which are not standard. Please consult your dealer representative for details. Square footage and room sizes are approximate.*

Follow us: 