

MODULINE



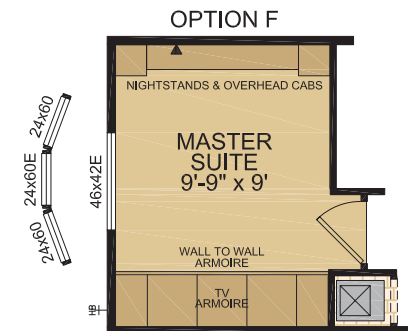
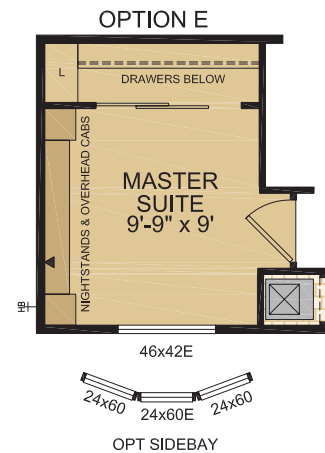
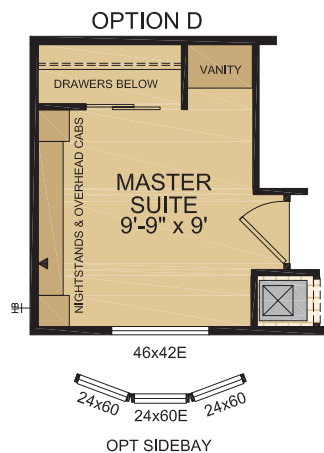
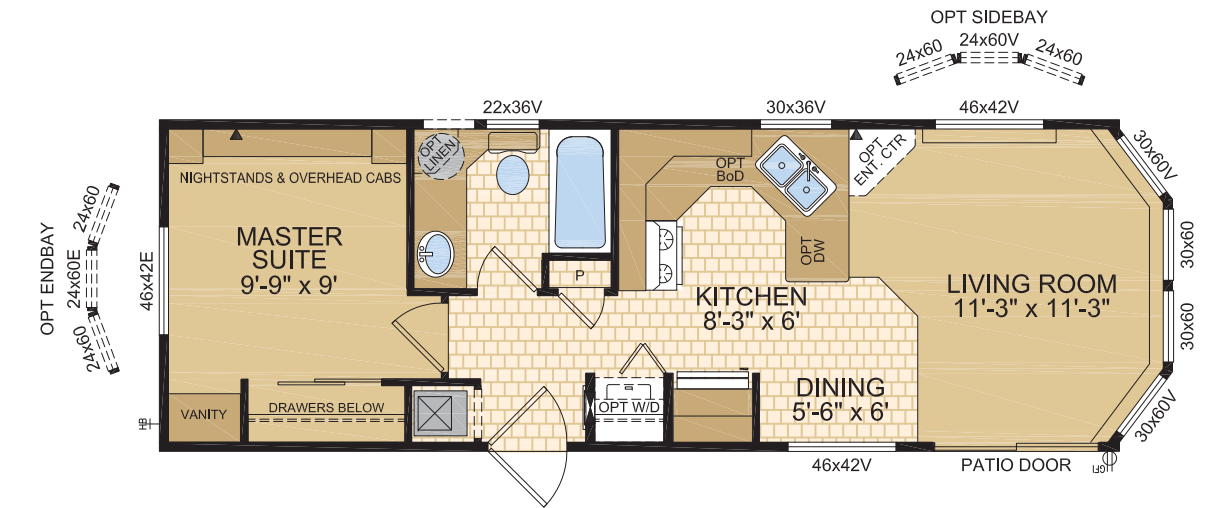
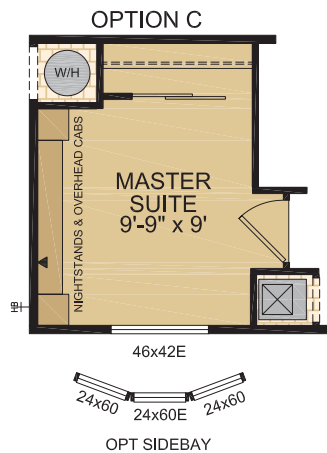
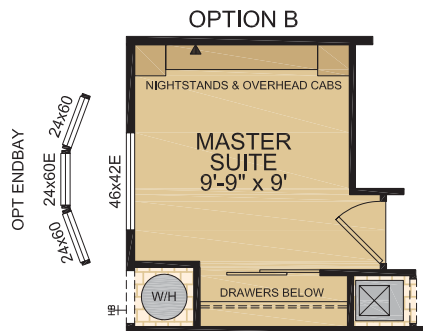
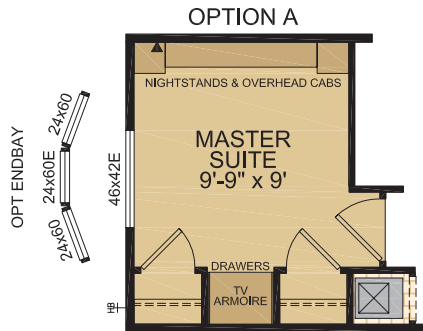
 *Pacific*  
Park Models

*“All The Comforts Of Home”*

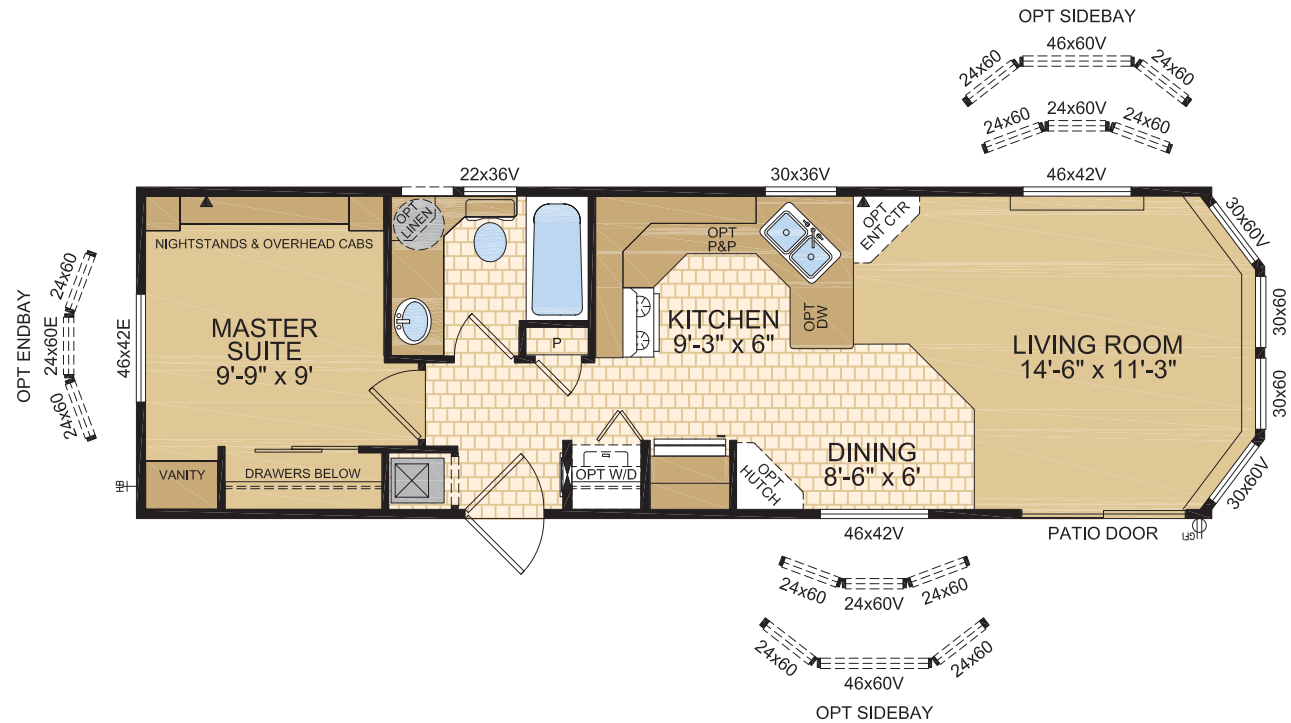
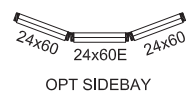
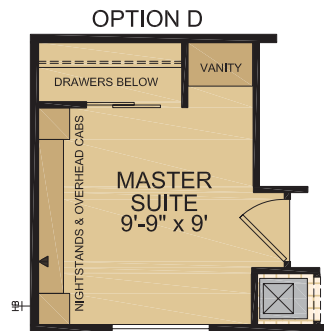
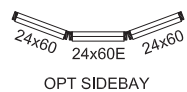
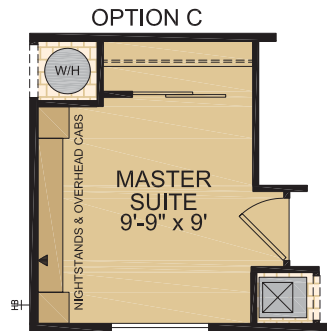
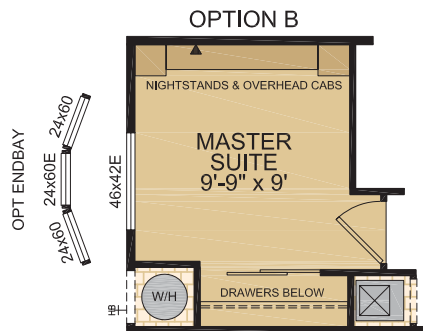
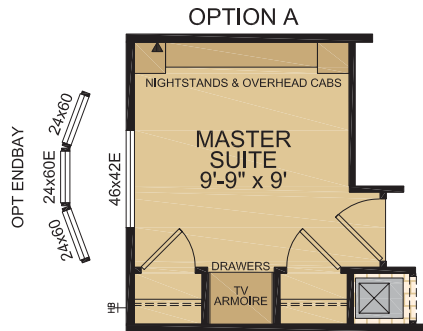
 **Moduline**  
Proudly Built in Canada 



# 12036 Bailey 432 SQ. FT. (12' x 36')



# 12040 Logan 480 SQ. FT. (12' x 40')

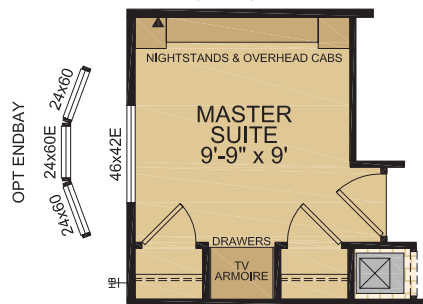


# 12044 Meadow 528 SQ. FT. (12' x 44')

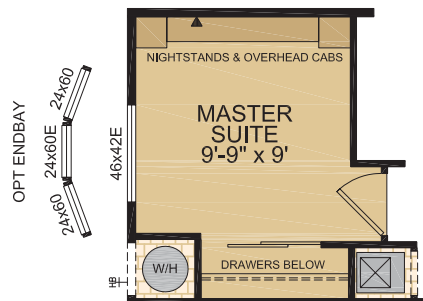


**12045 Simcoe** 528 SQ. FT. (12' x 44')

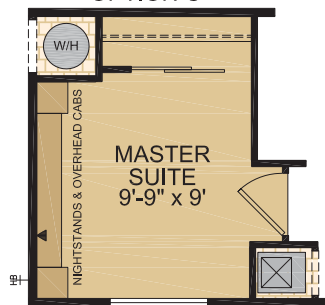
OPTION A



OPTION B

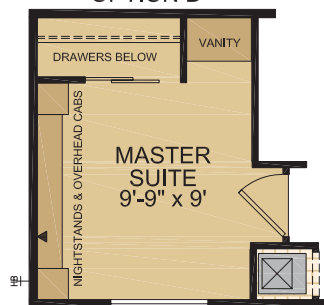


OPTION C



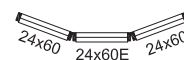
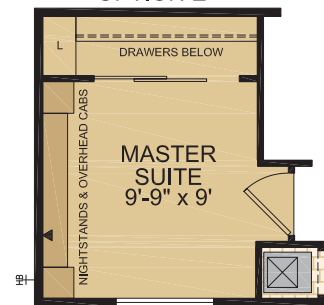
OPTION C

OPTION D



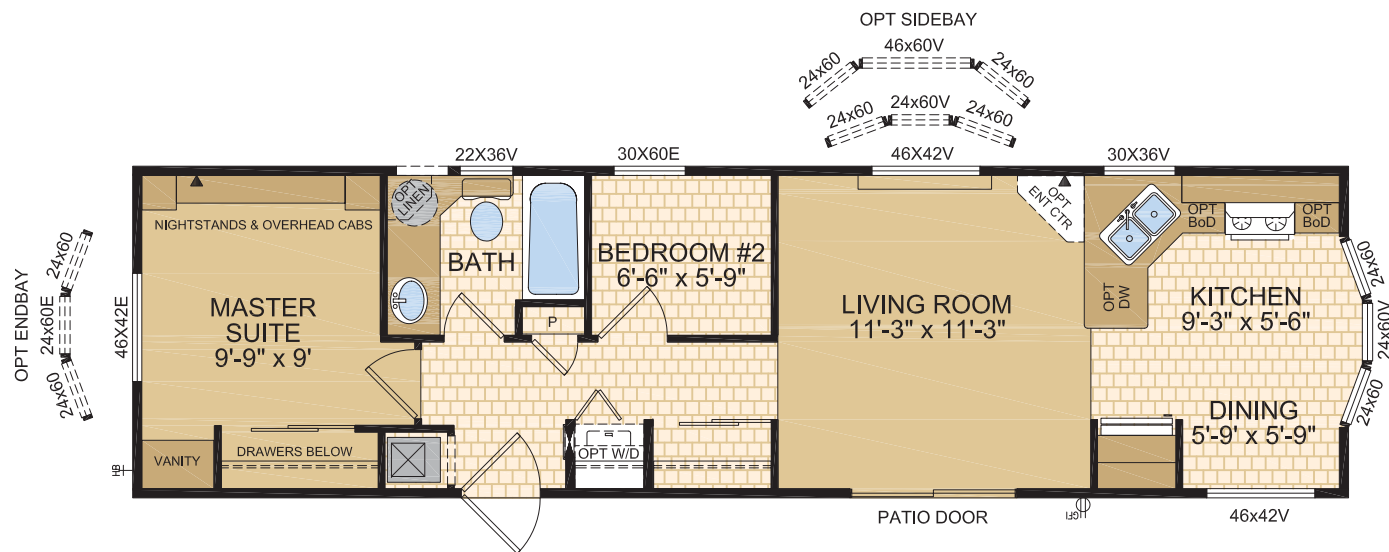
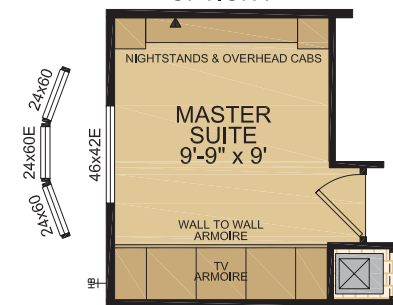
OPTION D

OPTION E



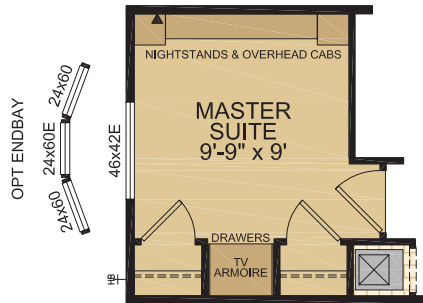
OPTION E

OPTION F

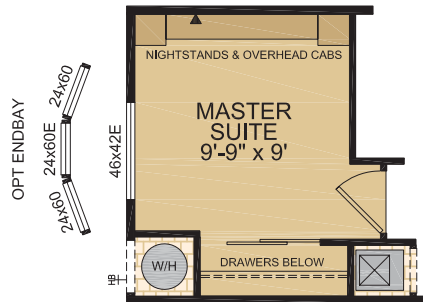


# 12144 O'Hara 528 SQ. FT. (12' x 44')

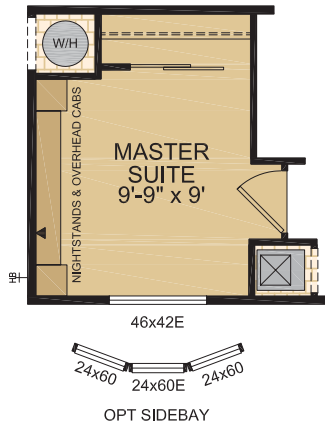
OPTION A



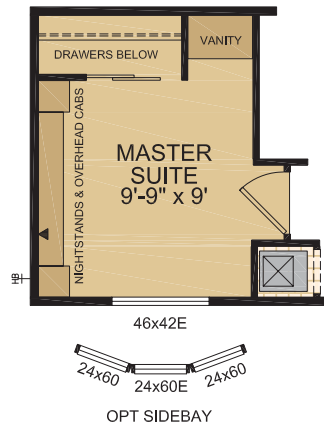
OPTION B



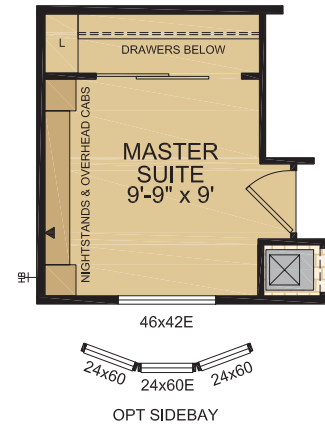
OPTION C



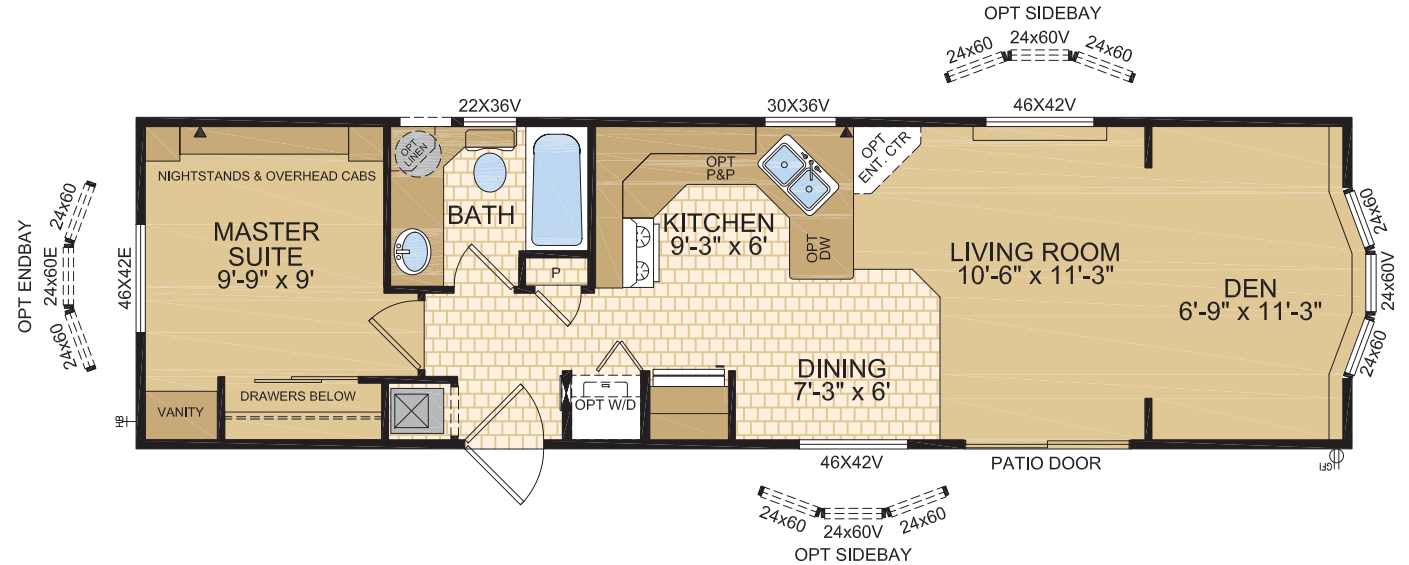
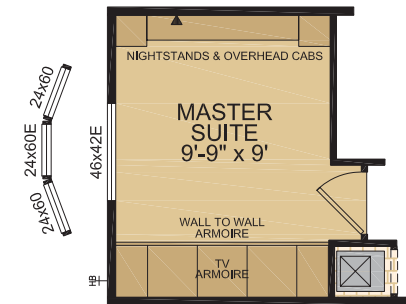
OPTION D



OPTION E



OPTION F



**OPTION A**

MASTER SUITE  
9'-9" x 9'

NIGHTSTANDS & OVERHEAD CABS

TV ARMOIRE

DRAWERS

48" x 42" E

OPT ENDBAY

24x60 24x60E 24x60

OPTION B

NIGHTSTANDS & OVERHEAD CABS

MASTER SUITE  
9'-9" x 9'

W/H

DRAWERS BELOW

46x42E

2x4x60

2x4x60

2x4x60

2x4x60

**1000 sq. ft. model**

**Master Suite:** 9' x 9' (includes nightstands & overhead cabinets, vanity, drawers below, and optional linen closet).

**Bedroom #2:** 6'-3" x 5'-9" (includes optional window treatments).

**Kitchen:** 8' x 6' (includes optional dishwasher, optional window treatments, and optional sidebay).

**Dining:** 7'-3" x 4'-6" (includes optional window treatments).

**Living Room:** 10' x 11'-3" (includes optional window treatments and optional trap windows).

**Bathroom:** Includes optional window treatments.

**Optional Features:** OPT ENDBAY, OPT LINEN, OPT W/D, OPT DW, OPT L ENH. CAB., OPT SIDE BAY, PATIO DOOR.

**Dimensions:** 22X36V, 30X60E, 30X36V, 46X42V, 30X60V, 30X60, 46X42E, 24X60, 24X60V.

OPTION D

46x42E

24x60 24x60E 24x60

OPT SIDEBAY

OPTION E

L

DRAWERS BELOW

MASTER SUITE  
9'-9" x 9'

NIGHTSTANDS & OVERHEAD CABS

46x42E

24x60 24x60E 24x60

OPT SIDEBAY

**OPTION F**

2x60E 2x60

46x42E

NIGHTSTANDS & OVERHEAD CABS

**MASTER SUITE**  
9'-9" x 9'

WALL TO WALL ARMOIRE

TV ARMOIRE

HP

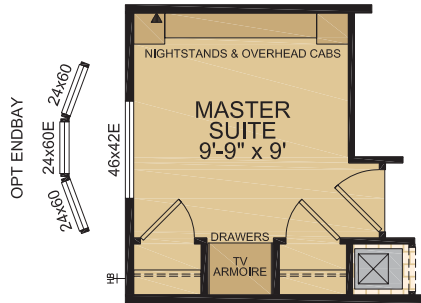
TOILET

SHOWER

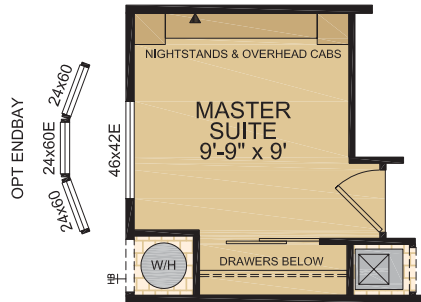


# 12244 Livingstone 528 SQ. FT. (12' x 44')

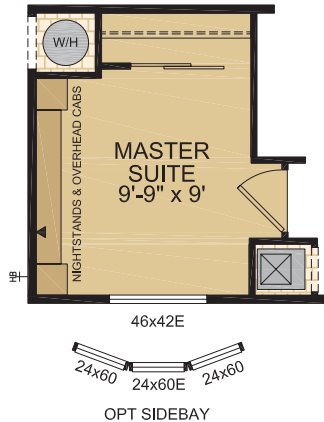
OPTION A



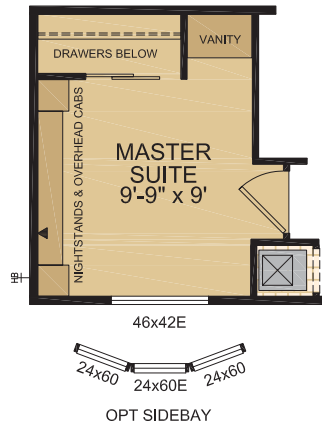
OPTION B



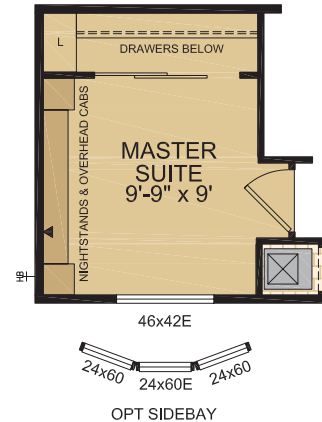
OPTION C



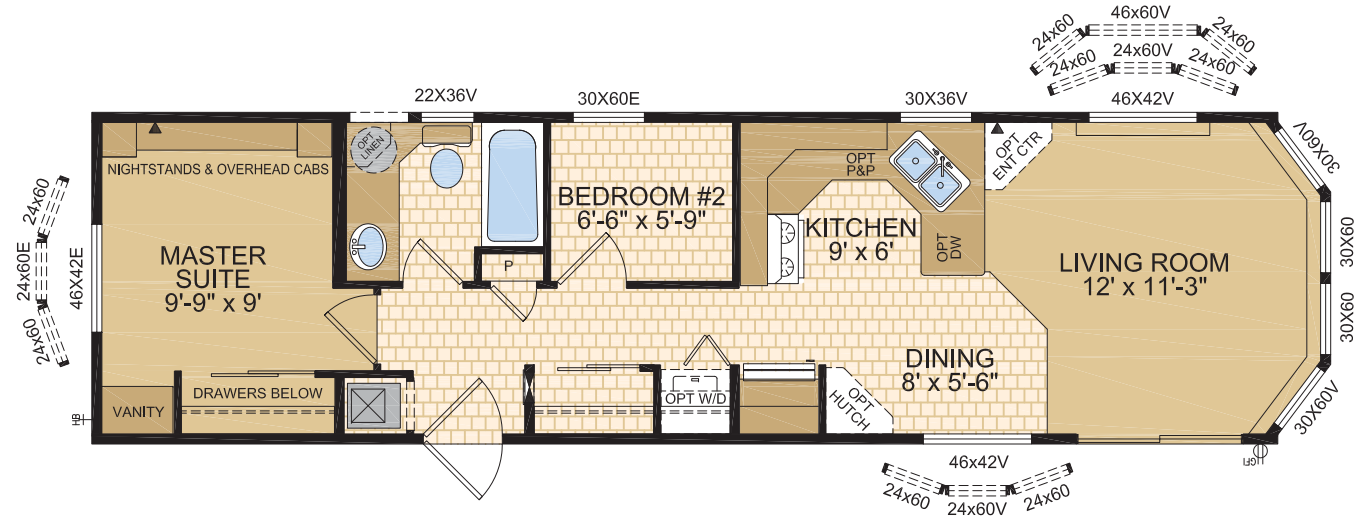
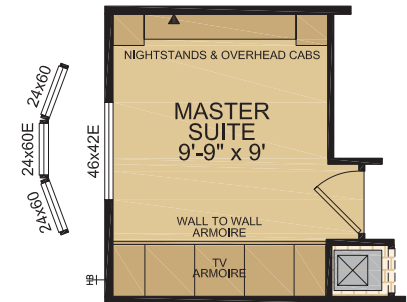
OPTION D



OPTION E



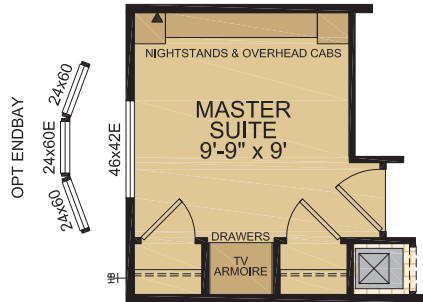
OPTION F



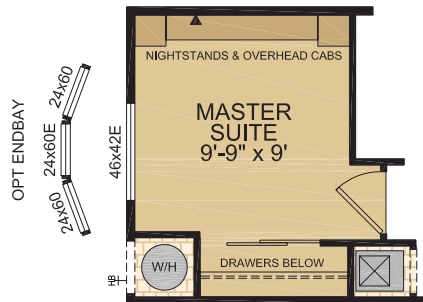


**12644 Crawford** 456 SQ. FT. (12' x 38')

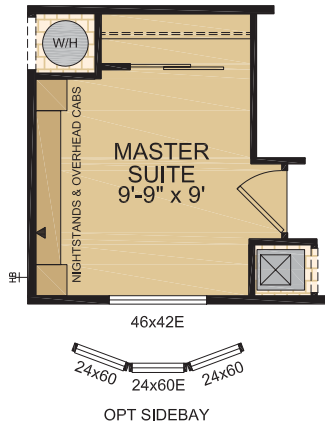
OPTION A



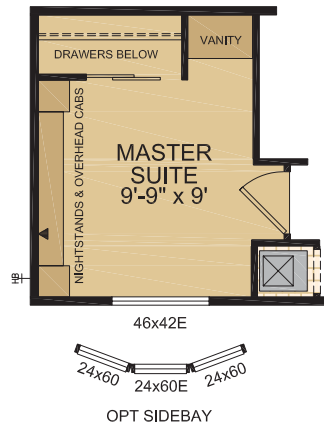
OPTION B



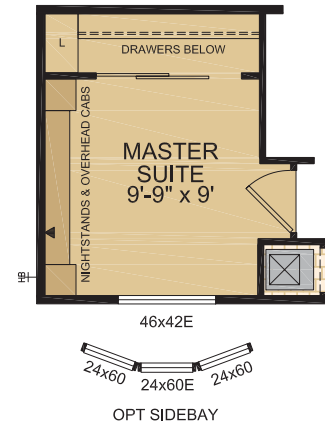
OPTION C



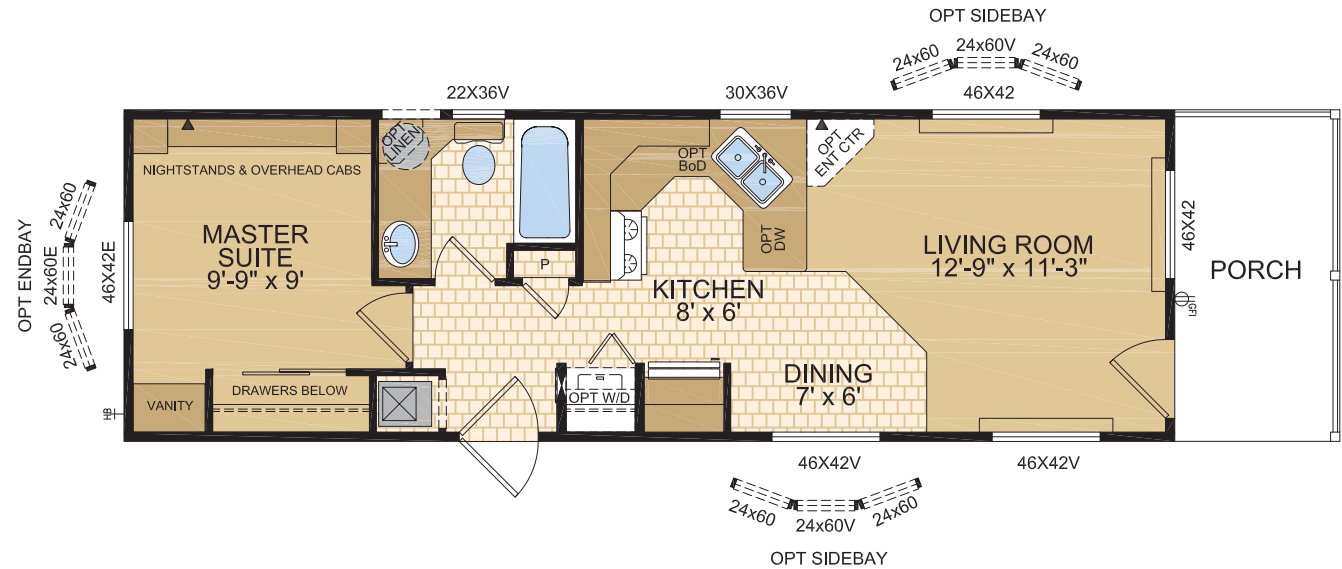
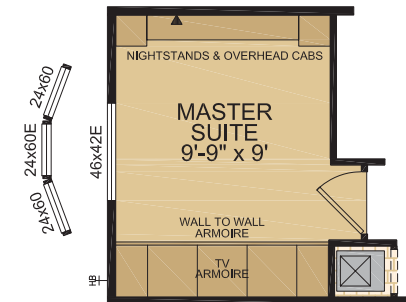
OPTION D



OPTION E



OPTION F



# *Inspiring Decors...*



## STANDARD FEATURES & SPECIFICATIONS

### DISTINCTIVE FEATURES

- Built to the Z-241 code
- 8' Ceilings
- Front bay window (most models)
- Cathedral ceiling throughout
- Cathedral cove moulding throughout
- Décora switches and receptacles
- 7" sides, 18" front vented eaves (Does not include rear)
- Deluxe bedroom nightstands w/ cabinets

### GENERAL CONSTRUCTION

- 2" x 8" Floor Joist at 16" o.c.
- 2" x 4" sidewall, at 16" o.c.
- Detachable hitch
- Triple axles
- Heavy tubular steel frame
- 6 mil Interior vapour barrier
- Floor decking, 5/8" OSB T & G, glued & screwed
- 3/8" Exterior O.S.B. sheathing
- 7/16" Roof sheathing
- Fiberglass shingle roof (25 yr warranty)
- Engineered full 5.65/12 pitch roof trusses
- Maintenance free vinyl lap siding with metal fascia
- Residential maintenance free Low E Argon Filled (R-5) PVC vinyl windows
- Residential vinyl patio door with lock (most models)
- Coach lights at all exterior entrances
- Screen doors at rear exterior door
- Dehumidistat control
- Exterior GFI receptacle
- Exterior frost free tap
- Insulation – Roof R28, Floor R20, Wall R12
- Textured (primed) gyproc ceiling

### TASTEFUL INTERIORS

- Plush saxony carpet in Living Room and Master Bedroom
- Quality cushioned linoleum flooring in all other areas
- Coordinating window valance over venetian blinds (inset in window) in all areas except bathrooms and trap windows
- Shelf above LR windows
- Pre-finished interior passage doors in Crystal White colour

### BRIGHT, BEAUTIFUL KITCHENS

- Deluxe tile backsplash
- Pantry – select models
- 19 cu ft 2-Door frost free refrigerator
- 30" propane range
- Exterior vented range hood with light
- Range hood with light
- Double stainless steel sink
- Dowelled full modular cabinetry w/crown moulding
- Three distinctive colors of cabinet doors to choose from with matching moulding & trim colour

### SPACIOUS BATHS

- Obscure bath window w/decorative valance
- Deluxe tile backsplash
- One piece quality fiberglass tub and shower unit with single lever
- Power bath fan on separate switch
- Mirror & Theatrical lights
- Residential type toilet and sink
- GFI receptacle

### UTILITY SERVICES

- Electronic ignition gas furnace
- 30 Gallon electric hot water tank
- 50 Amp electrical service with 25' cord
- Exterior propane line
- GFI protected receptacle for heat tape
- CO2/Smoke detector(s) c/w battery backup
- Two communication outlets (LR & MBR)



All Moduline Homes offer a

**10**  
**YEAR WARRANTY**

