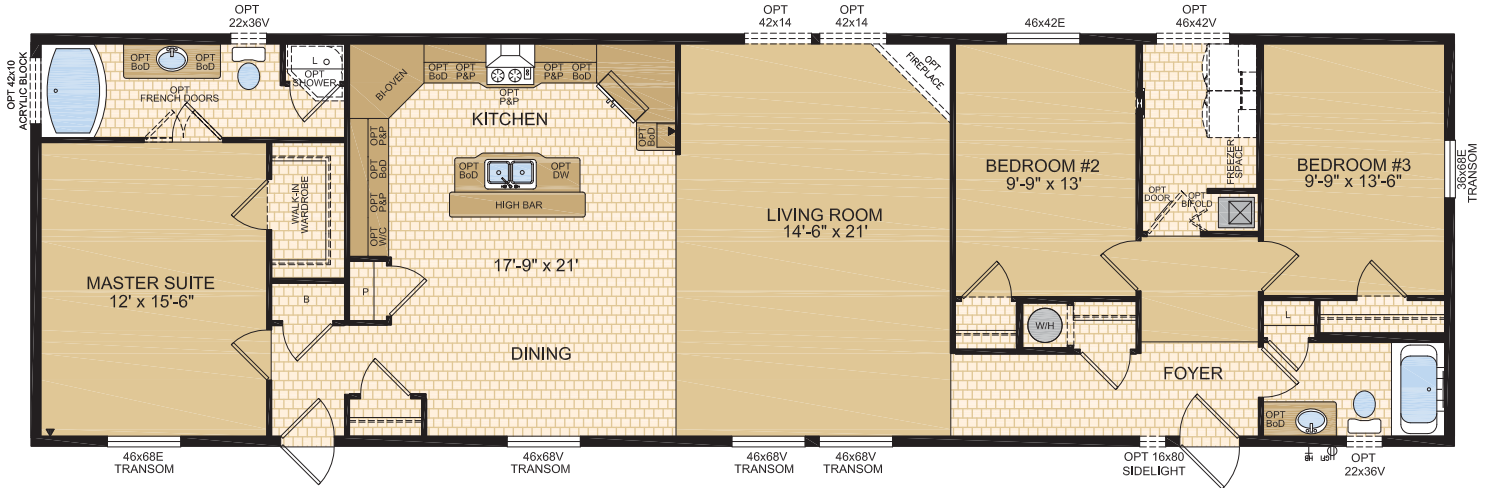


# mansura

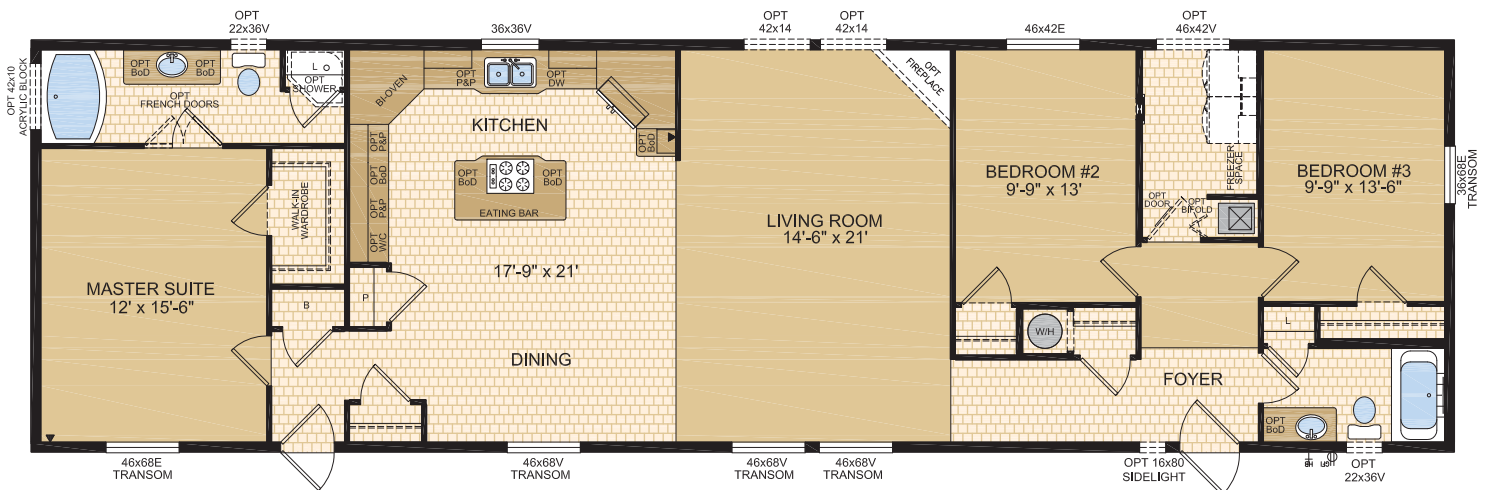
**"GOURMET KITCHEN"**  
22' WIDE

**3 BED / 2 BATH**  
22' x 76', 1672 SQ. FT.

**MODEL 22715GK**



**MODEL 22716GK**



# STANDARDS FEATURES & SPECIFICATIONS

## SPECIAL FEATURES

- Transom windows (white lattice incl)
- Chef's island with sink (Model 22715)
- Chef's island with cerantop cooktop & stainless steel/glass range hood (Model 22716)
- Exterior vented deluxe stainless steel range hood (Model 22715)
- Cerantop cooktop & built-in oven (black)
- Stepped kitchen cabinets
- Decorative full height tile backsplash
- 19 cubic foot, 2-door, frost free refrigerator (black)
- Separate storage room

## GENERAL CONSTRUCTION

- 8' Ceilings
- Cathedral ceiling in living, dining area, and kitchen
- Maintenance free vinyl lap siding and metal fascia
- Fiberglass shingle roof (25 year)
- 12" sides, 18" front & rear vented eaves
- Engineered open web truss floor @ 16" o.c. with heavy tubular steel frame
- 7/16" roof sheathing
- Engineered full 4-12 pitch roof trusses
- Textured (primed) gyproc ceiling
- Exterior walls built 2" x 6" @ 16" o.c. strengthened with 3/8" OSB sheathing on inside and outside of wall
- 5/8" T & G OSB Floor Decking, glued and screwed
- Decorative insulated entry doors with dead bolt and peephole (36" front door)
- Coach lights at all exterior entrances
- Screen doors on front and rear entrances
- Residential maintenance free Low E Argon Filled (R-5) PVC vinyl windows
- PVC windows c/w vinyl sills, screens and security locks
- Exterior GFI electrical outlet and frost free water tap
- Insulation meets or exceeds codes Floors R-20, Walls R-20 & Ceiling R-40 (min)

## TASTEFUL INTERIORS

- Plush Saxony carpet in living room, hall and all bedrooms
- Quality cushioned linoleum flooring all other areas
- Coordinating window valance over 2" white faux wood blinds (inset in window) in all areas except bathrooms
- Pre-finished interior passage doors in crystal white colour

## BRIGHT, BEAUTIFUL KITCHENS

- Double stainless steel sink
- Spacious pantry
- Doweled, full modular cabinetry w/crown moulding
- Three distinctive colours of cabinet doors to choose from with matching moulding & trim colour
- Window above kitchen sink (model 22716)

## SPACIOUS BATHS

- One-piece quality fiberglass tub and shower units
- Curved shower rods in all tubs
- Expansive vanity mirrors with theatrical lights
- Deluxe tile backsplash
- GFI receptacle
- Power bath fan(s)
- Single lever faucet on tub/shower unit
- 36" vanity height in ensuite

## UTILITY SERVICES

- 100 amp electrical panel
- High efficiency (95.1+AFUE) gas furnace with condensation pump
- 33 Imp. (40 US) gallon natural gas water heater
- Wired, plumbed and vented for washer and dryer
- Shelf above washer and dryer
- Primary exhaust fan c/w dehumidistat & switch
- CO/Smoke Detector(s) c/w battery backup
- GFI breaker receptacle for heat tape
- Communication outlet (2) – kitchen and master bedroom



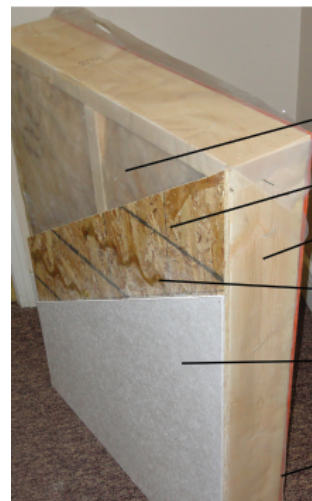
1421 Brier Park Crescent, Medicine Hat, Alberta T1C 1T8

Phone: (403) 527-1555 Fax: (403) 528-4486

In a continued effort to meet the challenges of product improvement, we reserve the right to modify plans, specifications and features without prior notice. Some homes may show optional items which are not standard. Please consult your dealer representative for details. Square footage and room sizes are approximate.

Printed in Canada. 3000/09/15

## Exterior Wall Construction BEST IN THE HOUSING INDUSTRY!



R-20 INSULATION WITH 6 MIL POLY

3/8" INTERIOR OSB

2"X6" EXTERIOR WALLS CONSTRUCTED @ 16" ON CENTER

ALPHA GLUE TO MAXIMIZE STRENGTH AND MAINTAIN HOMES INTEGRITY

5/16" VINYL PANEL FASTENED TO OSB USING ALPHA GLUE SYSTEM

3/8" EXTERIOR SHEATHING FASTENED TO STUDS WITH SHEATHING STAPLES AND VERSABOND GLUE