



RTM Series

(Ready to Move)

THE CRAIG
Custom Plan
62' x 31' 1795 sq.ft.
3 BEDS - 2 BATHS



Made by:



Moduline

Available at:



www.craigshomesales.com

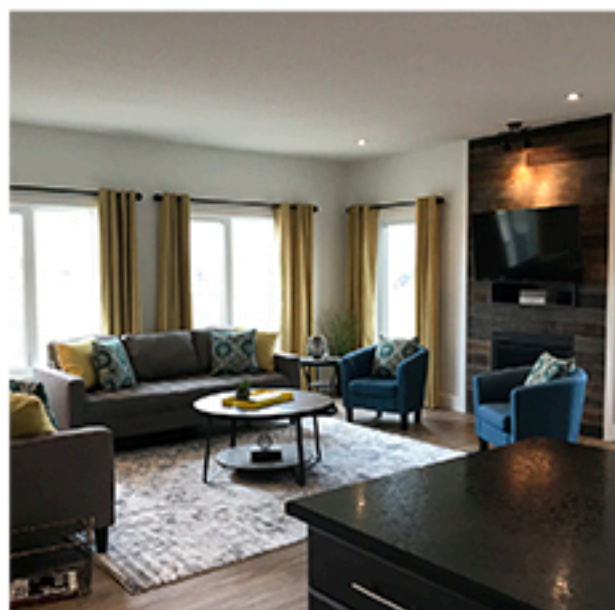
1.855.380.2266

915 - 43rd Street South Lethbridge

A RTM is a Ready-To-Move home that is fully constructed and delivered to your desired location. Unlike modular homes, RTM's are constructed and delivered in one piece and are designed to go on a full foundation or crawl space. Choose from a variety of floorplans or customize a plan that's just right for you.



At Craig's Home Sales our ultimate goal is customer satisfaction every step of the way. Our sales team are extremely knowledgeable about our product and the construction process. A leader in new designs, we will help you select the best floorplan to suit your needs including adding the perfect options.



Full turnkey packages are available - let us take care of everything!

Upgrade Options

Customized to Suit Your Needs!

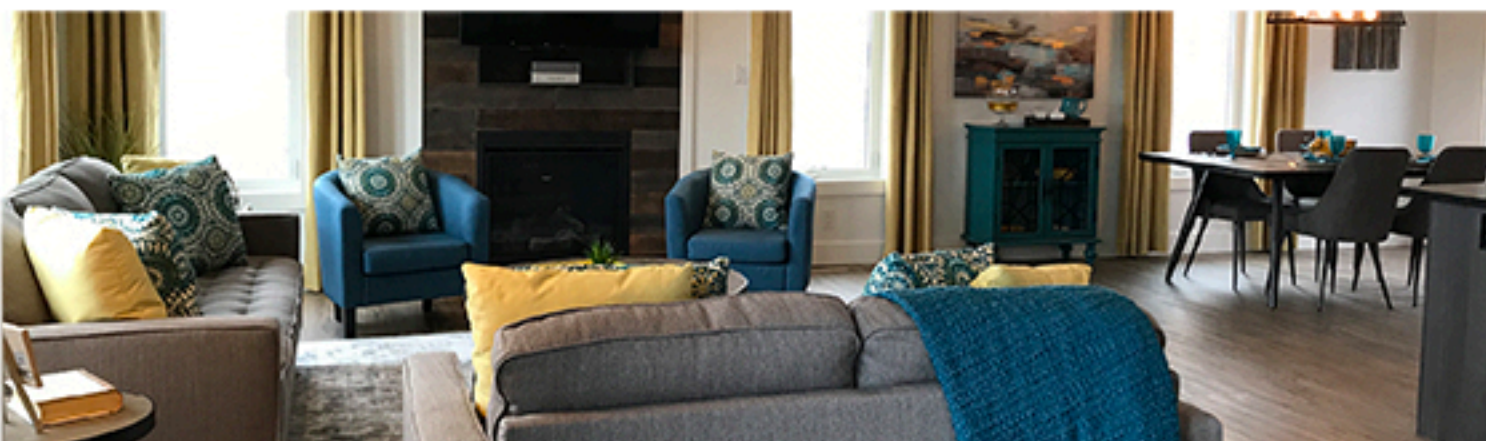


- Stainless Steel Appliances (gas stove)
- Under Cabinet Lighting
- Soft Close Cabinetry
- 2 Sets of Pot & Pan Drawers
- Full Tile Kitchen Backsplash
- Stainless Steel Chef's Sink

- Exterior Features Include Shakes & Stacked Stone
- Stained Front Door with Dual Designer Sidelights
- Garden Door off Dining Room
- Built to 9.36 Alberta Energy Code
- Contemporary Baseboards & Casings
- 9' Ceilings throughout Home



- Vinyl Plank Flooring
- Upgraded Lighting Package
- Pot Lights in Kitchen & Living Room
- Barnboard Accent Wall Over Fireplace
- Jetted Tub in Ensuite
- Laundry Center with Washer & Dryer





RTM Series

(Ready to Move)

GENERAL SPECIFICATIONS

Homes are built to meet or exceed CSA-A277 Building Codes

SUPERIOR CONSTRUCTION

- 1 Year Manufacturer's Warranty (10yr Available Through Retailer)
- Engineered 11-7/8" I Joists @ 16" O.C.
- 19/32" T&G OSB Floor Decking
- 1/4" Proboard Underlayment Beneath Lino Areas
- 7/16" OSB Roof Sheathing w/ H-Clips
- 3/8" Exterior OSB Sheathing
- Walls R-22, Roof R-50
- 6 mil CGSB Vapour Barrier
- Engineered Roof Trusses @ 24" O.C.
- 2"x6" Exterior Walls @ 24" O.C.
- 2"x4" Interior Walls @ 24" O.C.

MAINTENANCE FREE EXTERIORS

- Whole House Wrap
- Vinyl Lap Siding
- 24" Perimeter Vented Eaves
- Architectural Fiberglass Shingles w/Lifetime Ltd. Warranty
- Full 15 lb Felt Underlayment
- 6" Metal Fascia / Metal Soffit
- 36" Decorative Insulated Entry Doors w/Deadbolt - Peephole

TASTEFUL INTERIORS

- Cushioned Linoleum Flooring
- Plush Saxony Carpet w/ 7lb Underlayment
- 1/2" Primed and Painted Drywall
- Painted White Clermont Interior Passage Doors
- 2-1/4" Painted White Baseboard & Casing
- 9' Flat Ceiling Throughout (Spantex Texture)
- Light in Bathroom Above Mirror
- Bedroom and Hall Ceiling Lights
- Light Above Kitchen Sink
- Pendant Lights above Island
- Dining Room Light
- Decora Light Switches / Receptacles
- Paint - White
- Lever Style Door Handles
- Full Wall or Half Wall at Stairwell Opening (Model Specific)

WINDOWS (CASEMENT/AWNING/PICTURE)

- Double Pane (Double Low E & Argon Filled)
- Living Room - Model Specific
- Dining Room - 46x60 P/C
- Kitchen - 46x36 A (most models)
- Bedrooms/Office/Den - 46x60 P/C
- Bathroom - 22x36 A or Arctic Glass Window

BRIGHT BEAUTIFUL KITCHENS

- Frameless Cabinets w/Adjustable Shelving
- Crown Moulding on Cabinets
- Walk-In Pantry or Full Height Pantry
- Double Stainless Steel Sink
- Single Lever Pull Out Faucet w/Veggie Sprayer
- Laminate Counter Top and Deluxe 6" Tile Backsplash
- 2 Banks of Drawers
- Rough In for Vented Rangehood
- Appliances Optional

SPACIOUS BATHROOMS

- One Piece Fiberglass Oval Tub and Separate Shower Unit in Ensuite (Most Models)
- One Piece Tub/Shower Unit in Main Bath
- Beveled Vanity Mirror Above Sinks
- Chrome Single Lever Pressure Balanced Faucet on Tub/Shower Units
- Chrome Single Lever Faucet on Vanity Sinks
- Low Volume Flush Toilets with Lined Tank
- Low Sone Bath Fan(s) on Separate Switch
- Porcelain Vanity Sink
- Curved Shower Rods on Tub/Shower Units

UTILITY

- 100 amp Electrical Panel for Customer Hookup Onsite
- Electric CO/Smoke Detectors Main Floor & Secondary (If Applicable) Prewire for Detector in Basement
- 1-Exterior GFI Receptacle
- 1-Frost Free Tap
- GFI Protected Receptacles in Bathrooms
- AFCI Protected Receptacles as Required by Code
- 1-USB Combo Receptacle in Kitchen
- 2-Communication Conduits
- Coach Lights at All Exterior Doors
- Covered Porches/Recessed Entries Receive Pot Light(s) ILO Coach Lights
- 5 Wire Rough In for Thermostat
- Wireless Door Chime at Front Door
- Shut Off Valves All Fixtures
- All Waterlines Stubbed in Floor
- All Plumbing Stubbed in Floor
- Rough In for Radon gas venting
- Register and Return Air Rough-In with Covers
- Ducting Plenum and Registers Not Provided

