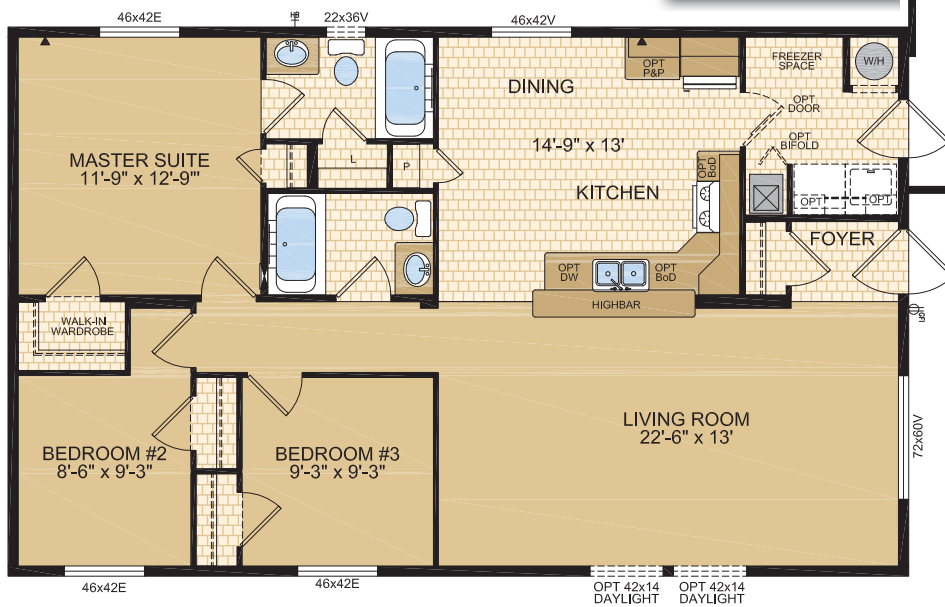


www.modulinemedicinehat.com

Queenston **Model 28132**



BEDROOM #
8'-6" x 9'-3"

BEDROOM #3
9'-3" x 9'-3"

LIVING ROOM
22'-6" x 13'

DINING

KITCHEN

FOYER

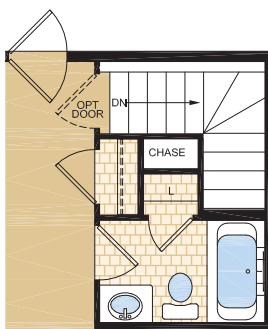
WALK-IN
WARDROBE

OPT 42x14 OPT 42x14
DAYLIGHT DAYLIGHT

OPT 42x14
DAYLIGHT

Pasadena Model 28139

27 x 56 • 1,512 sq. ft. (Note: Artist Rendering on front cover)



BEDROOM #2
9' x 10'-3"

MASTER SUITE
11'-9" x 13"

(OPT BEDROOM #4)
11' x 13'

DINING
9'-6" x 13'

KITCHEN
11'-6" x 13'

FOYER

LIVING ROOM
17' x 13"

OPT 42x10
ACRYLIC BLOCK

OPT
22x36V

30x60 DPI

30x60 DPI

OPT FIREPLACE

T 42x1
IC BL

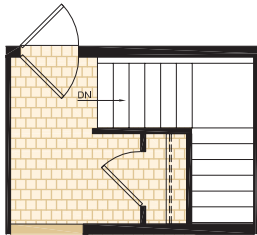
CO

1

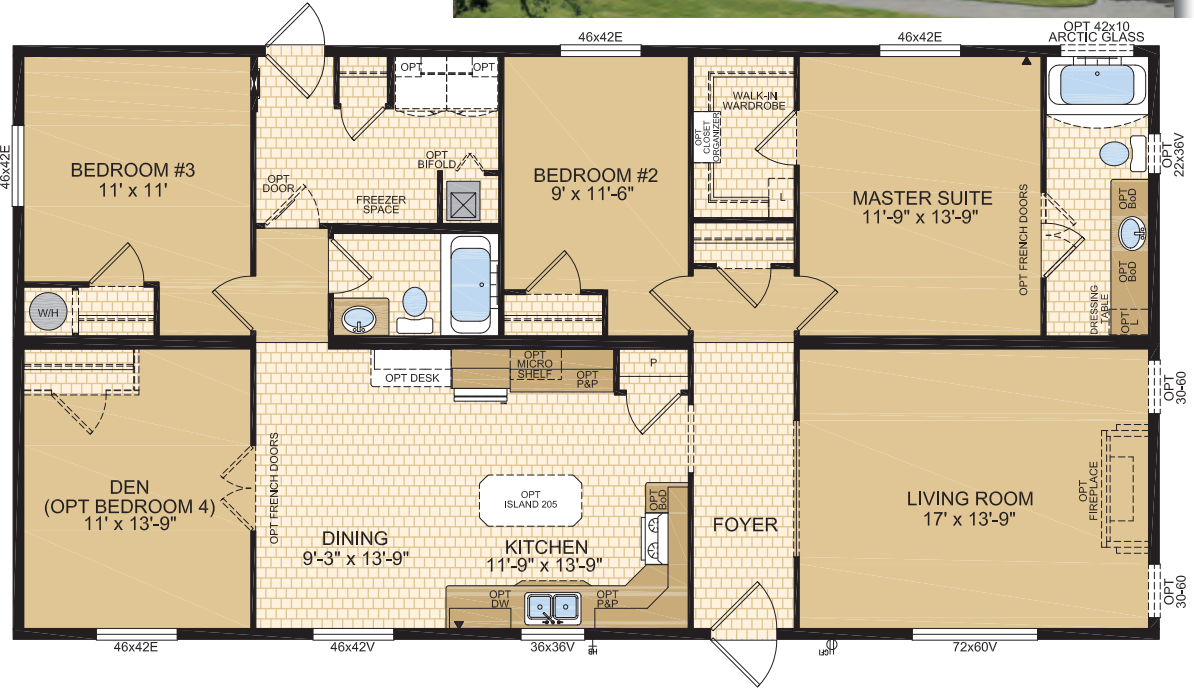


Bridgetown Model 30301

29 x 56 • 1,624 sq. ft.

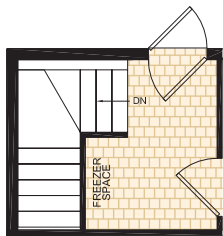
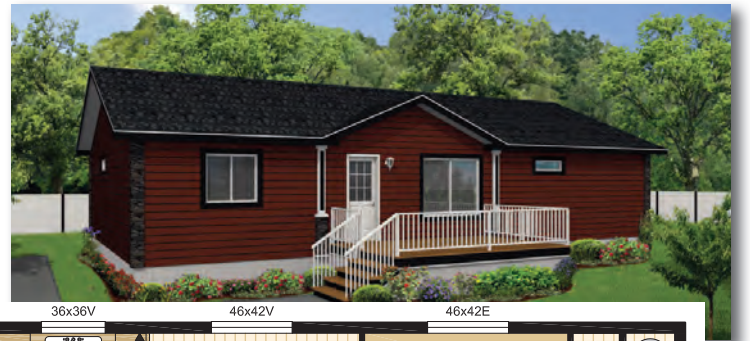


Optional
Foundation



Brighton Model 30302

29 x 52 • 1,508 sq. ft.



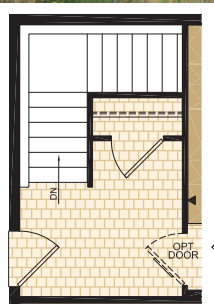
Optional
Foundation



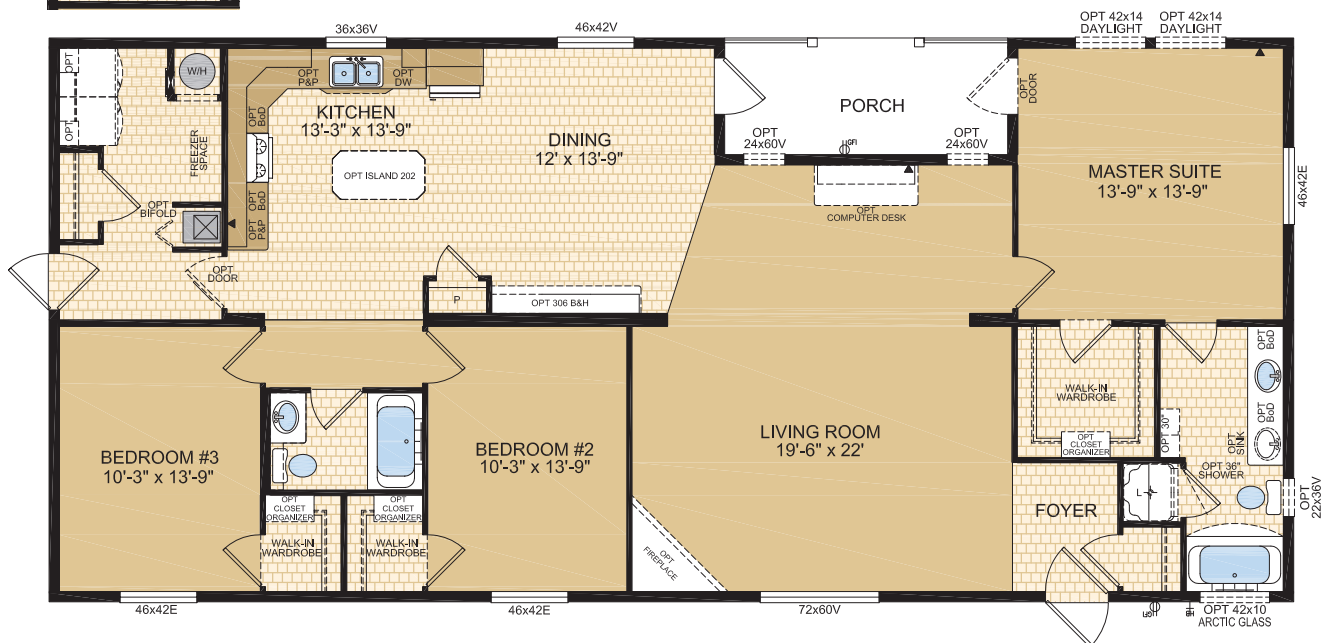
Sherbrooke

Model 30304

29 x 64 • 1,856 sq. ft.



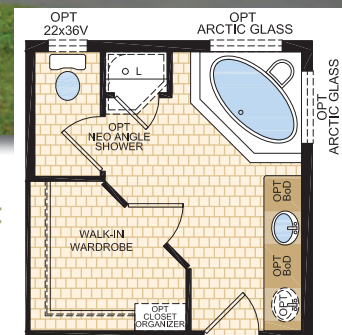
Optional Foundation



29 x 60 • 1,740 sq. ft.



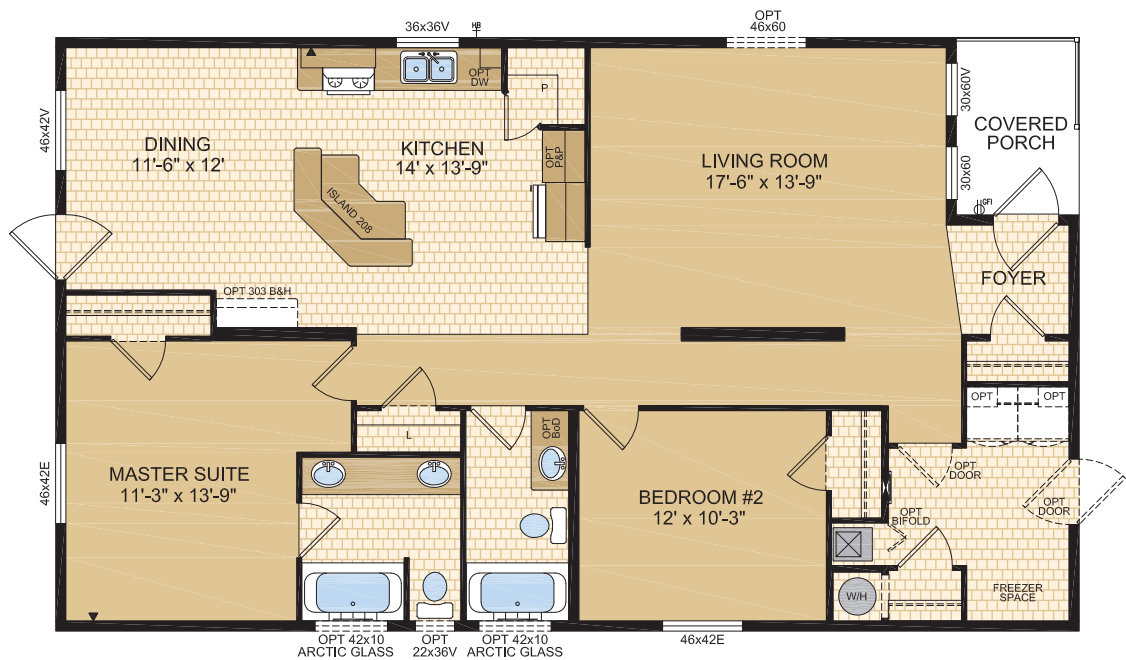
Optional Ensuite Layout



Kitsalino **Model 30610** 29 x 50 • 1,450 sq. ft.

Model 30610

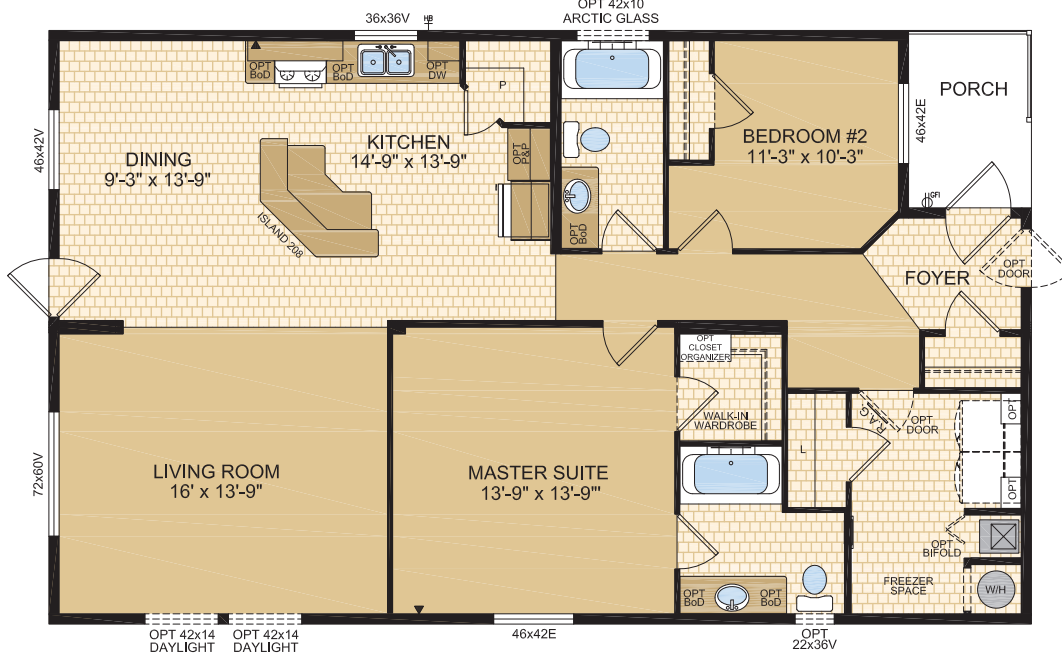
29 x 50 • 1,450 sq. ft.



Marpole

Model 30611

29 x 48 • 1,392 sq. ft.



Townsend

Model 30612

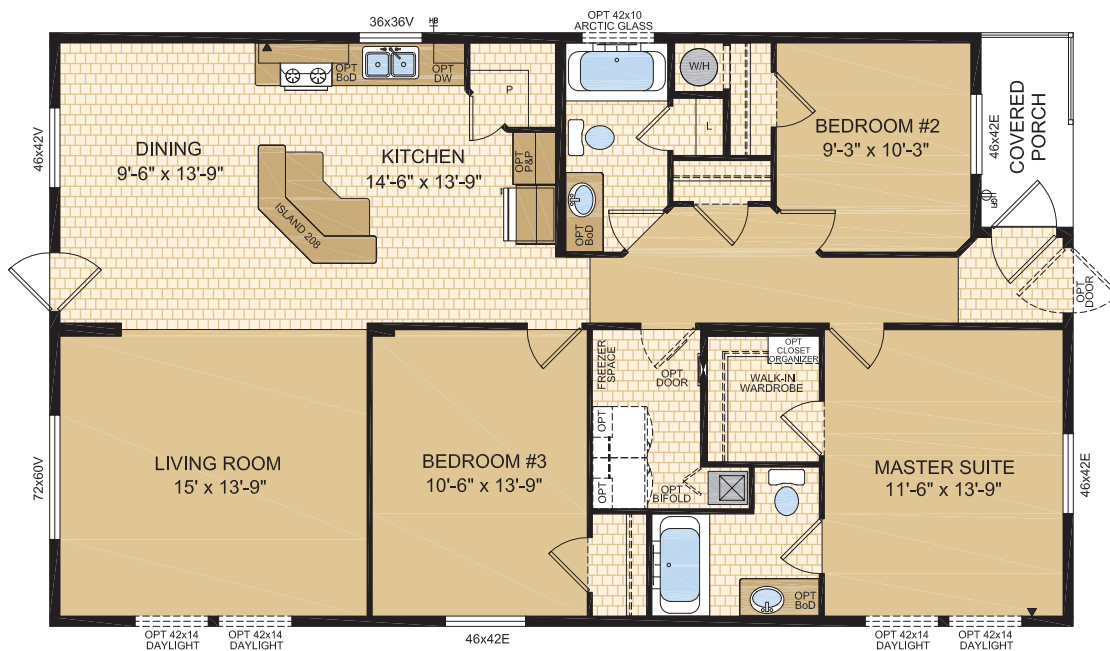
29 x 48 • 1,392 sq. ft.



Trethewy

Model 30613

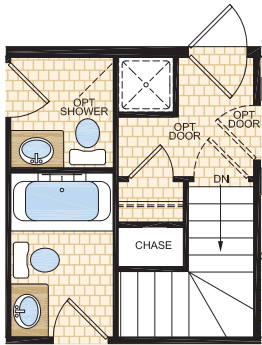
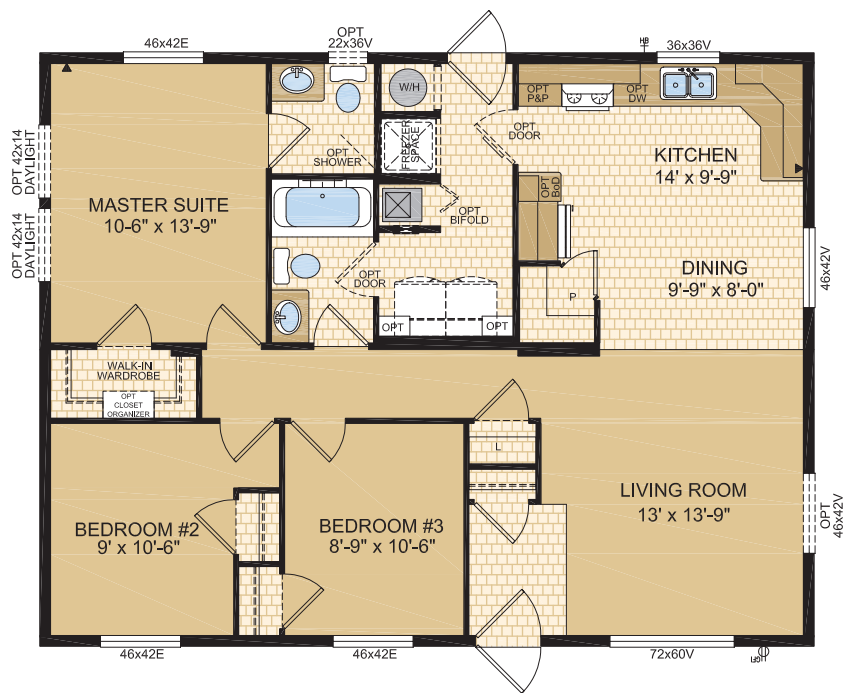
29 x 50 • 1,450 sq. ft.



Saratoga

Model 30692TS

29 x 38 • 1,102 sq. ft.



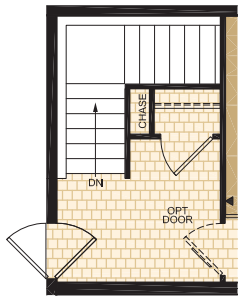
Optional
Foundation

MANSURA MULTI - SECTION HOMES

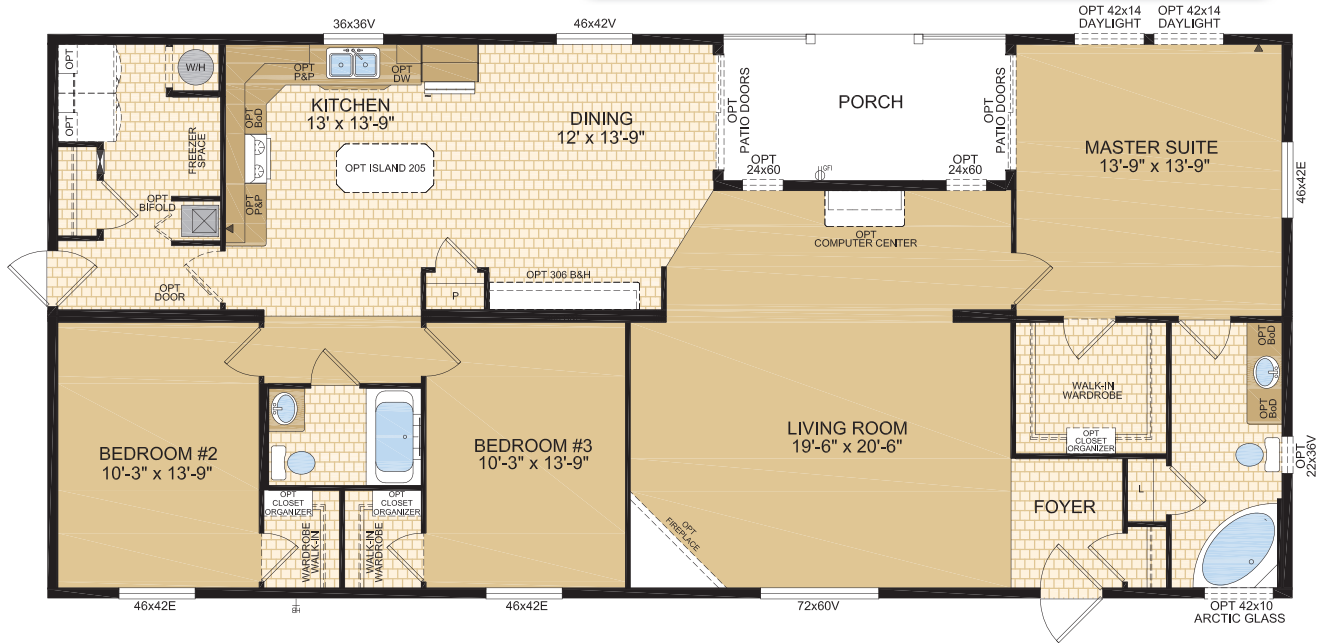
Ridge Manor

Model 30695

29 x 64 • 1,856 sq. ft.



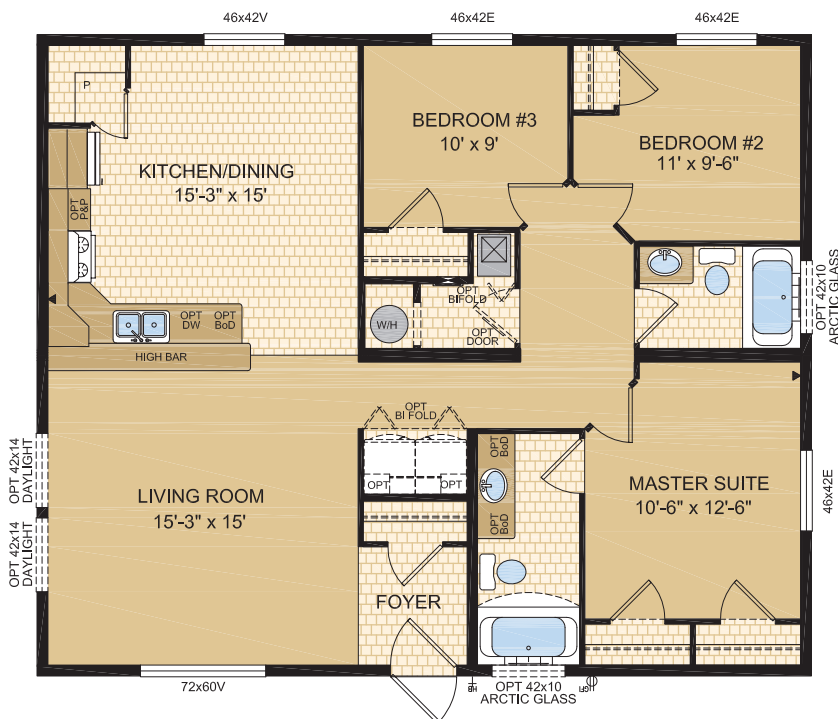
**Optional
Foundation**



Wedgeport

Model 32300TS

32 x 38 • 1,216 sq. ft.



**Optional
Foundation**

STANDARD FEATURES & SPECIFICATIONS

GENERAL CONSTRUCTION

- Built to the A-277 code Zone 7A
- 8' Ceilings
- Cathedral ceiling in living, dining area & kitchen
- Maintenance free vinyl lap siding & metal fascia
- 18" Extended eaves (*All 4 sides*)
- Architectural asphalt shingle roof (*limited lifetime warranty*)
- 7/16" roof sheathing
- Engineered full 4/12 hinged roof trusses
(*Fixed roof available with truss foot option on 30' wides or less; may require over height permit*)
- Engineered full 4/12 pitch roof trusses (*on 30' wides or larger*)
- Textured (*primed*) gyproc ceiling
- Exterior walls built 2"x6" and strengthened with 3/8" OSB sheathing on inside and outside of wall
- Shipping wall included on T/S models
- 19/32" T&G OSB Floor Decking glued and screwed
- 2"x10" Floor joists @ 16" o.c. on 30'/32'/40' wides
- Heavy tubular steel frame
- Decorative insulated entry doors with dead bolt and peephole (*36" front door*)
- Coach lights at all exterior entrances
- Screen doors on front and rear entrances
- Residential 1.36U-value, maintenance free Dual Low E Argon Filled PVC vinyl windows (*meets zone 8*)
- Exterior GFI electrical outlet & frost free water tap
- Insulation meets zone requirements as per zone 7A/7B/8 of the 9.36 Energy Code: Floors R-48, Walls 22 & Ceiling R-40 (*min*)

TASTEFUL INTERIORS

- Plush saxony carpet in living room, great room, family room, den, hall and all bedrooms (*certain models*)
- Quality cushioned linoleum flooring all other areas
- Coordinating window valance over 2" white faux wood blinds (*inset in window*) in all areas except bathrooms
- Pre-finished interior passage doors in Crystal White Colour

BRIGHT, BEAUTIFUL KITCHENS

- Deluxe tile backsplash
- Window over kitchen sink (*most models*)
- High Bar Kitchen (*select models*)
- Deluxe 30" electric range
- Exterior vented range hood with light
- 19 cubic foot, 2-door, frost free refrigerator
- Double stainless steel sink
- Spacious pantry (*selected models*)
- Doweled, full modular cabinetry w/crown moulding
- Five distinctive colors of cabinet doors to choose from with matching moulding & trim colour

SPACIOUS BATHS

- One-piece quality fiberglass tub and shower units
- Curved Shower rods in all tubs
- Expansive vanity mirrors with Hampton vanity light
- Deluxe tile backsplash
- GFI receptacle
- Power bath fan(s)
- Single lever faucet on tub/shower unit
- 36" vanity height in ensuite

UTILITY SERVICES

- 100 amp electrical panel
- Programmable thermostat
- Upgrade Building envelope to meet 0.20 L/M2S 3m insulated water lines on hot and cold sides at water heater
- High efficiency (*95.1+AFUE*) gas furnace with condensation pump
- 33 Imp. (*40US*) gallon natural gas water heater
- Wired, plumbed and vented for washer and dryer
- Shelf above washer and dryer
- Primary exhaust fan c/w dehumidistat and switch
- CO/Smoke Detector(s) c/w battery backup
- Smoke detectors in bedrooms
- Arc Fault protection in areas required by code
- GFI protected receptacle for heat tape
- Dedicated receptacle in "Freezer Area"
- Communication outlet (2) – Kitchen and Master Bedroom



www.modulinemedicinehat.com

Exterior Wall Construction

Best Standard in the Housing Industry!

2"X6" EXTERIOR WALLS CONSTRUCTED
@ 24" O/C TO MAXIMIZE ENERGY
EFFICIENCY

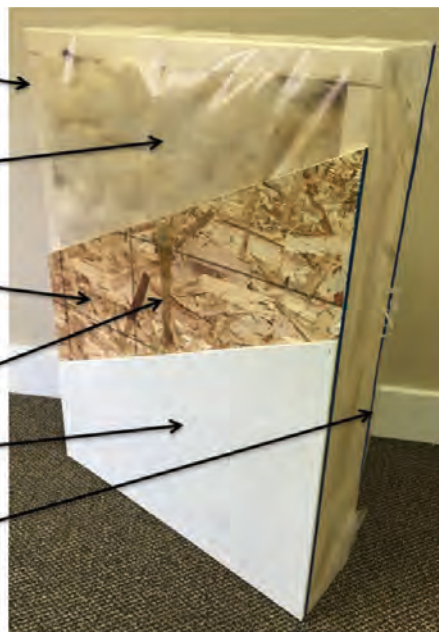
R20 INSULATION WITH 6 MIL POLY
(R22 ZONES 6 TO 8 UNDER
9.36 ENERGY CODE)

3/8" STRUCTURAL INTERIOR OSB
FOR THE STRONGEST WALL IN THE
INDUSTRY

ALPHA GLUE TO MAXIMIZE STRENGTH AND
MAINTAIN HOMES INTEGRITY



VINYL COVERED GYPROC FASTENED TO
OSB USING ALPHA GLUE SYSTEM

3/8" STRUCTURAL EXTERIOR OSB FASTENED
TO STUDS WITH SHEATHING STAPLES



"We surpass the competition!"



Follow us:  

1421 Brier Park Crescent, Medicine Hat, Alberta T1C 1T8 Phone: (403) 527-1555 Fax: (403) 528-4486

In a continued effort to meet the challenges of product improvement, we reserve the right to modify plans, specifications and features without prior notice. Some homes may show optional items which are not standard. Please consult your dealer representative for details. Square footage and room sizes are approximate.