

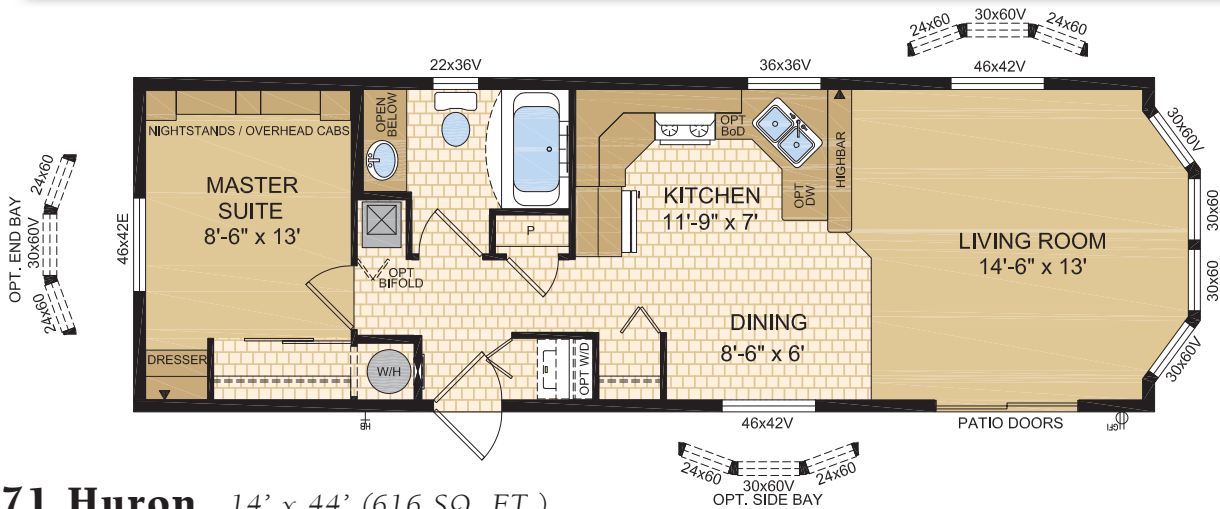


“Live Your Dreams”

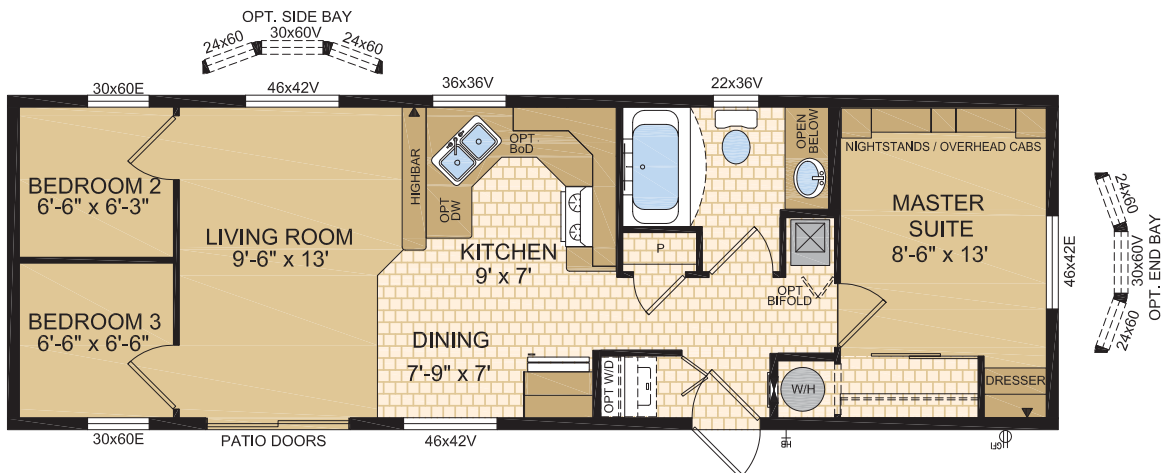
Your Get-Away Cottage Can Have all The Comforts Of Home

Getting away to your place at the lake or at the golf course should be as easy as getting in the car and just going. A Lake House from Moduline makes it more than easy – it makes it an absolute delight! Relax in style with homes that celebrate natural light and space with cathedral ceilings, panoramic bay windows and a refreshing open design concept. Moduline Industries puts dedicated craftsmanship and care into each Lake House, craftsmanship acquired over 48 years of building quality holiday homes, more than 40,000 of them!

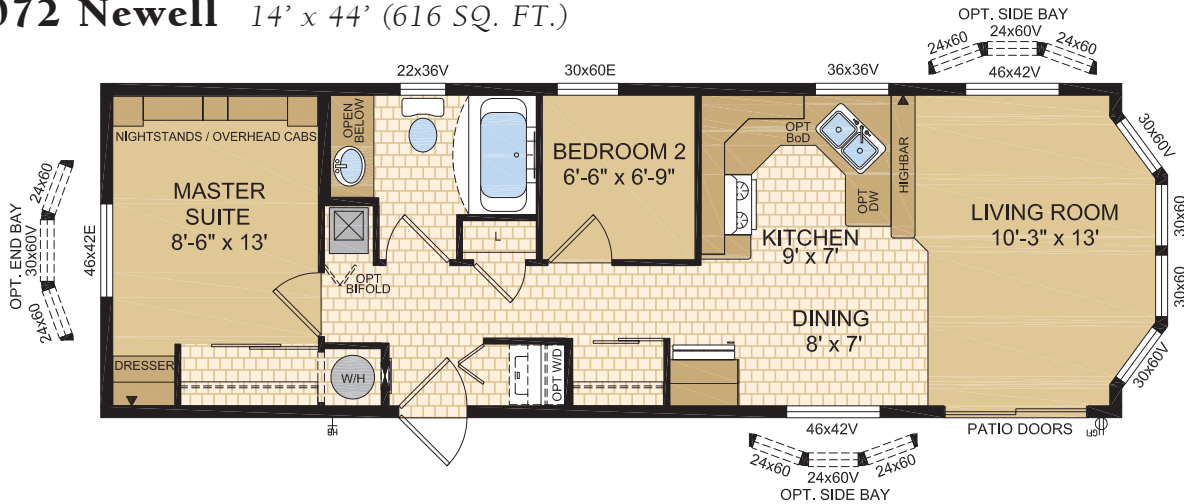
14070 Havasu 14' x 44' (616 SQ. FT.)



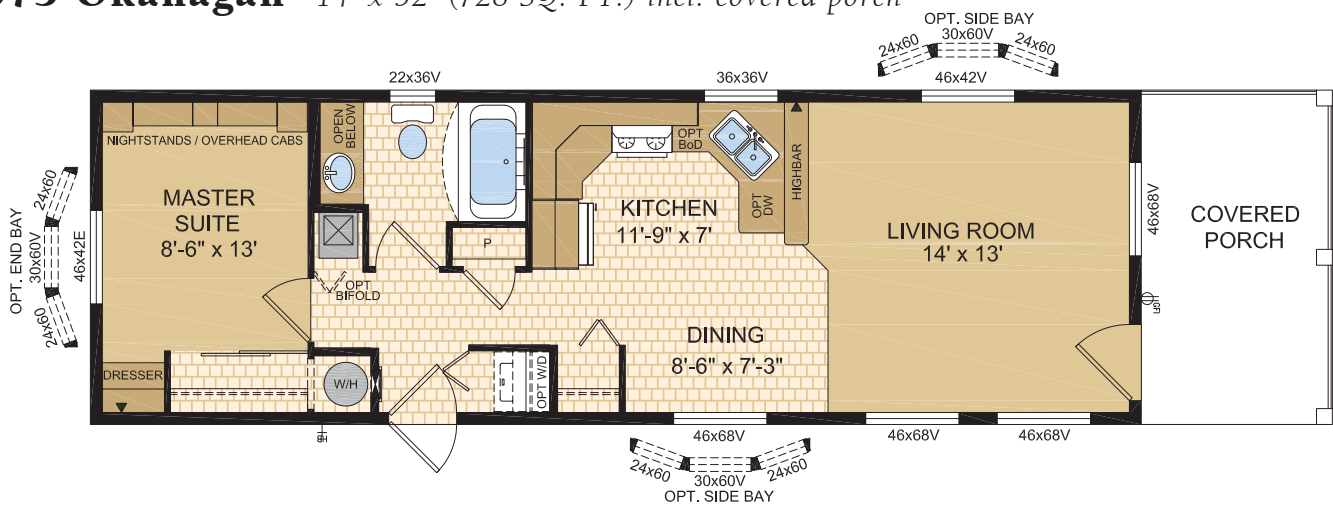
14071 Huron 14' x 44' (616 SQ. FT.)



14072 Newell 14' x 44' (616 SQ. FT.)

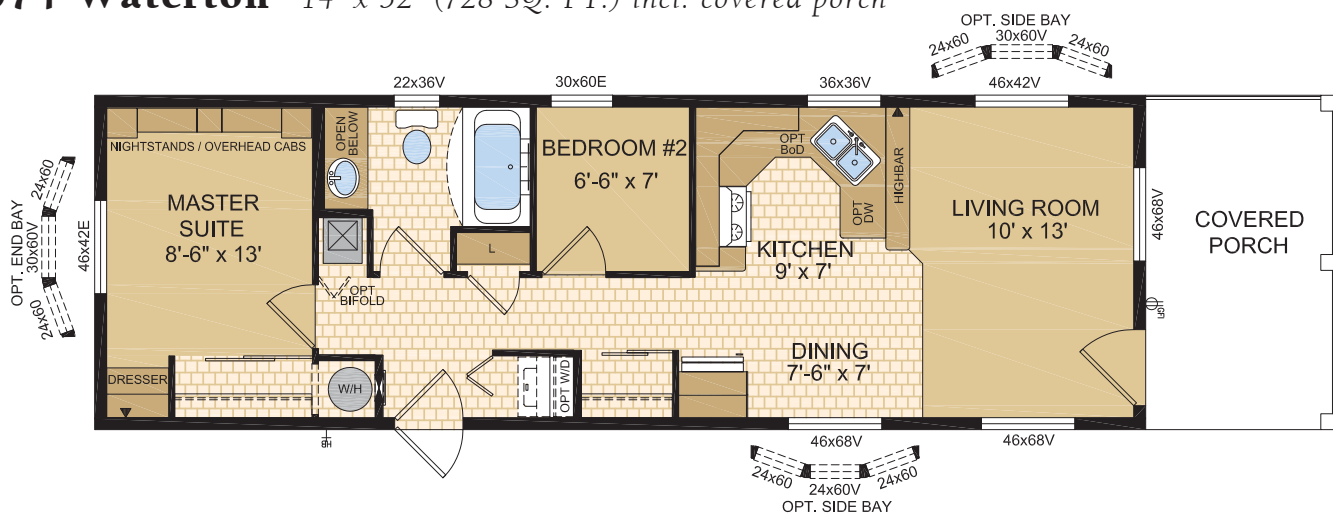


14073 Okanagan 14' x 52' (728 SQ. FT.) incl. covered porch

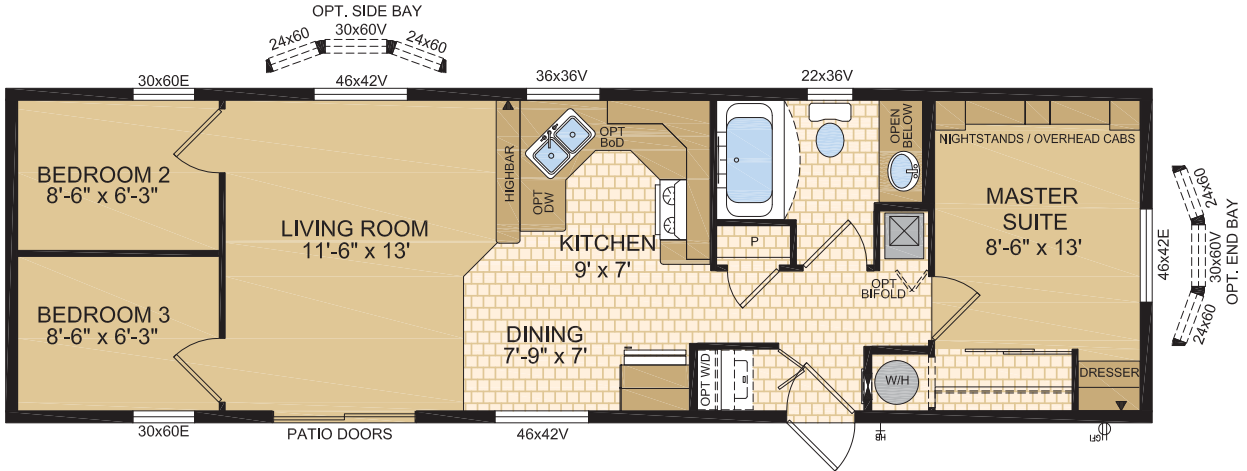


“It’s simple low maintenance living. Now, we spend more time on the important things in life.”

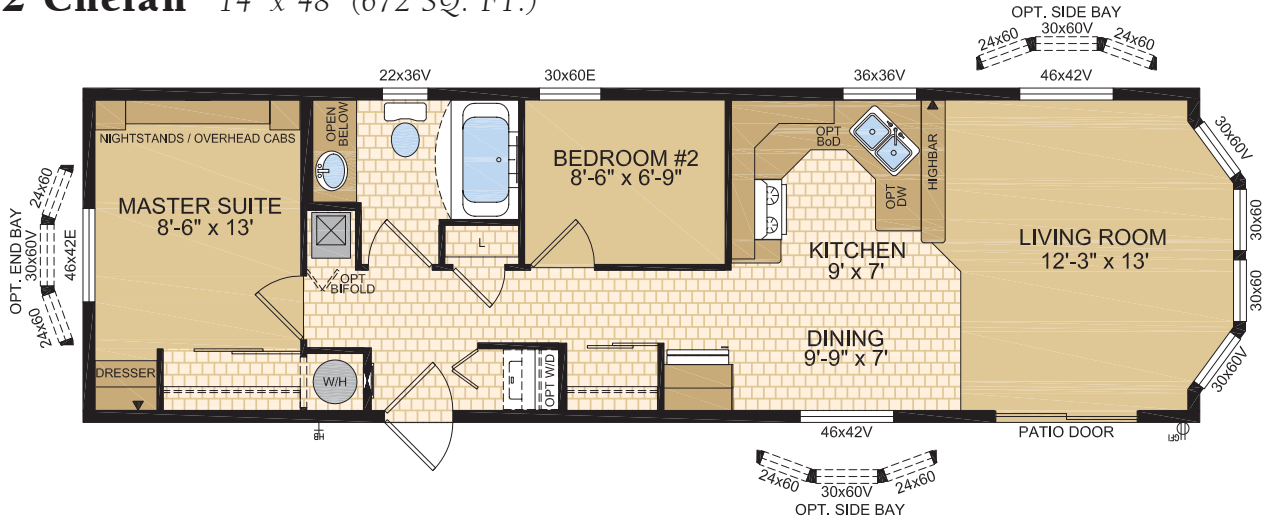
14074 Waterton 14' x 52' (728 SQ. FT.) incl. covered porch



14131 Shuswap 14' x 48' (672 SQ. FT.)

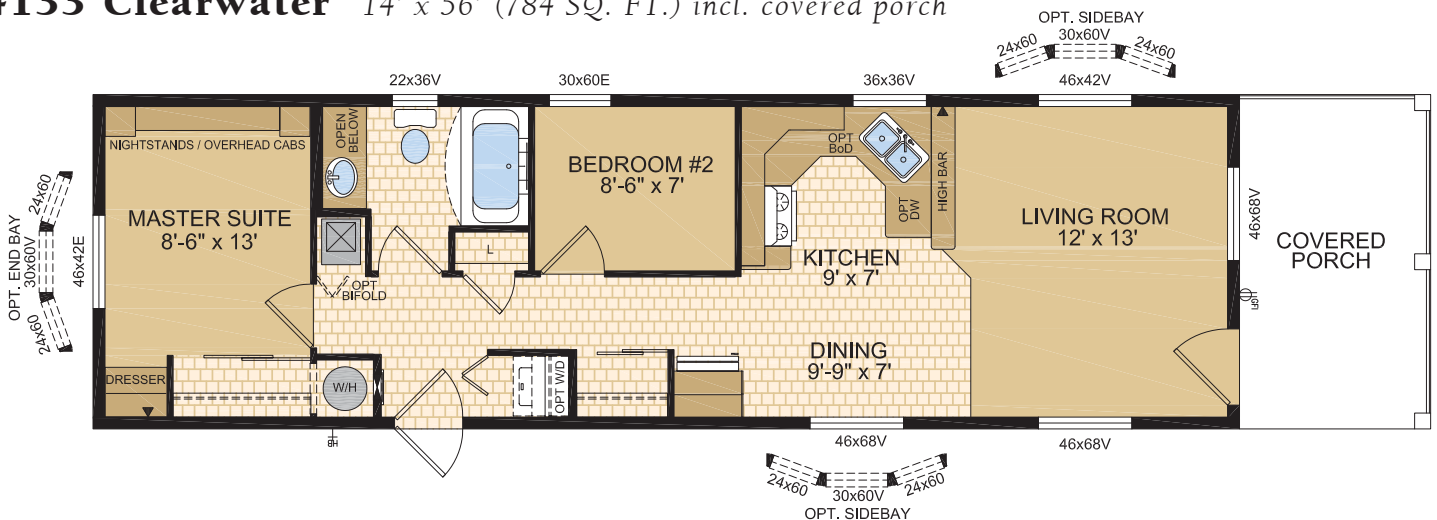


14132 Chelan 14' x 48' (672 SQ. FT.)

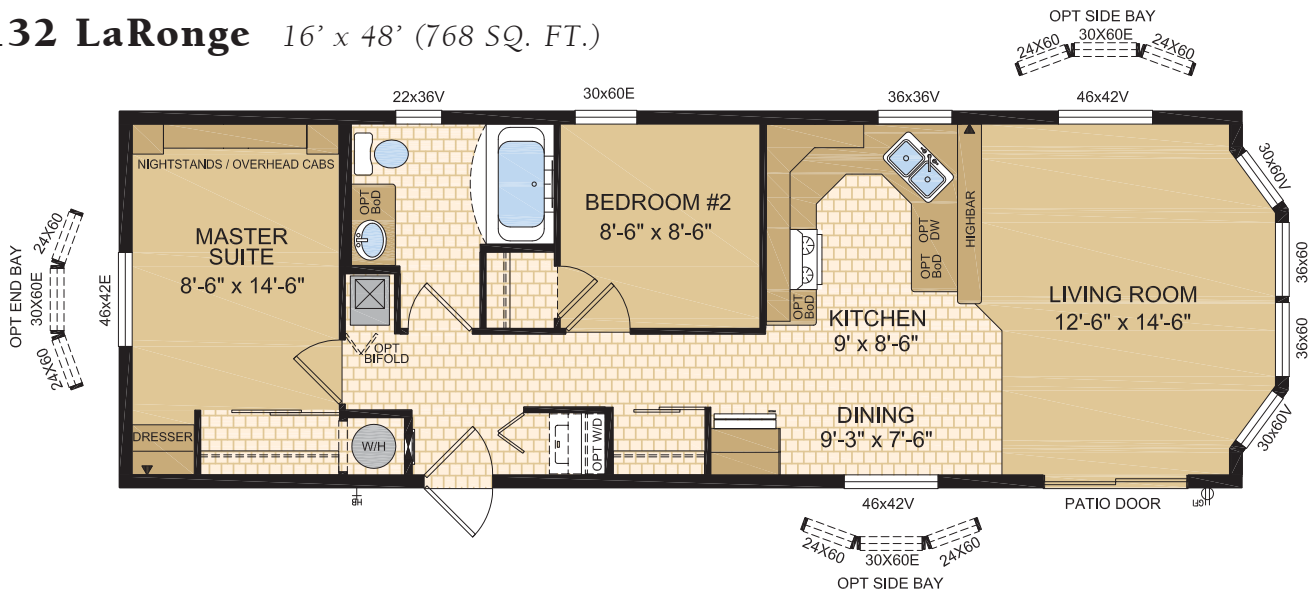


“After buying our vacation home, we have all the room we need to spoil our grandchildren...”

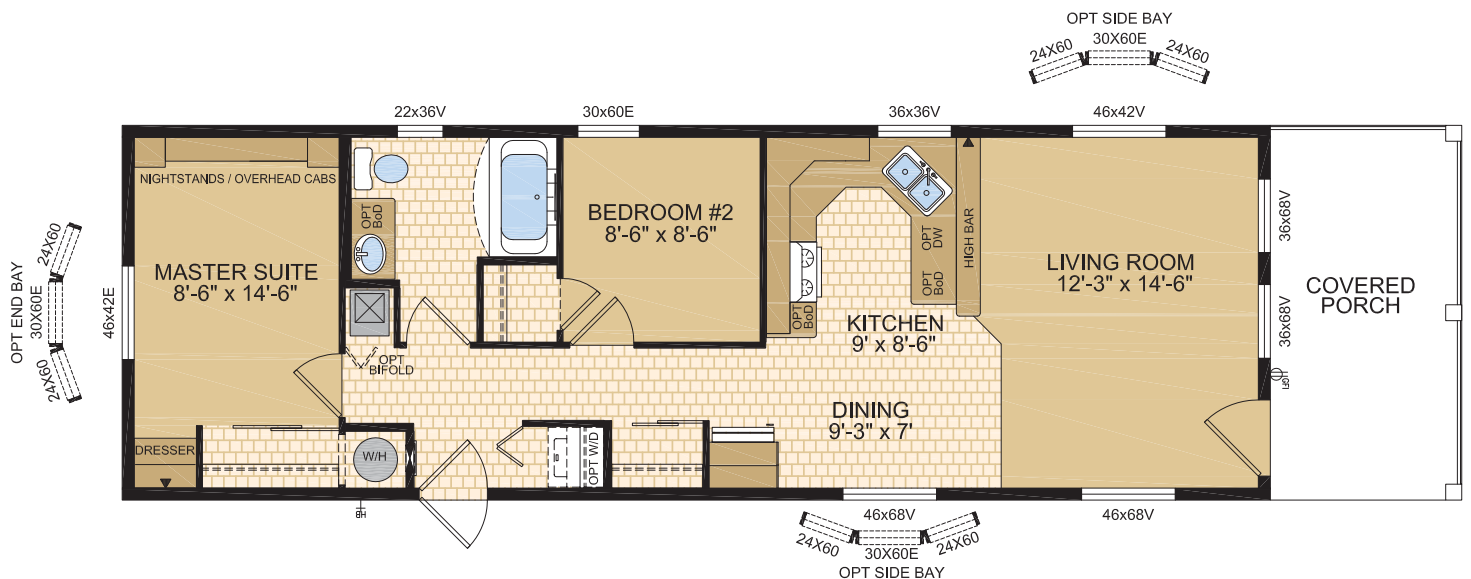
14133 Clearwater 14' x 56' (784 SQ. FT.) incl. covered porch



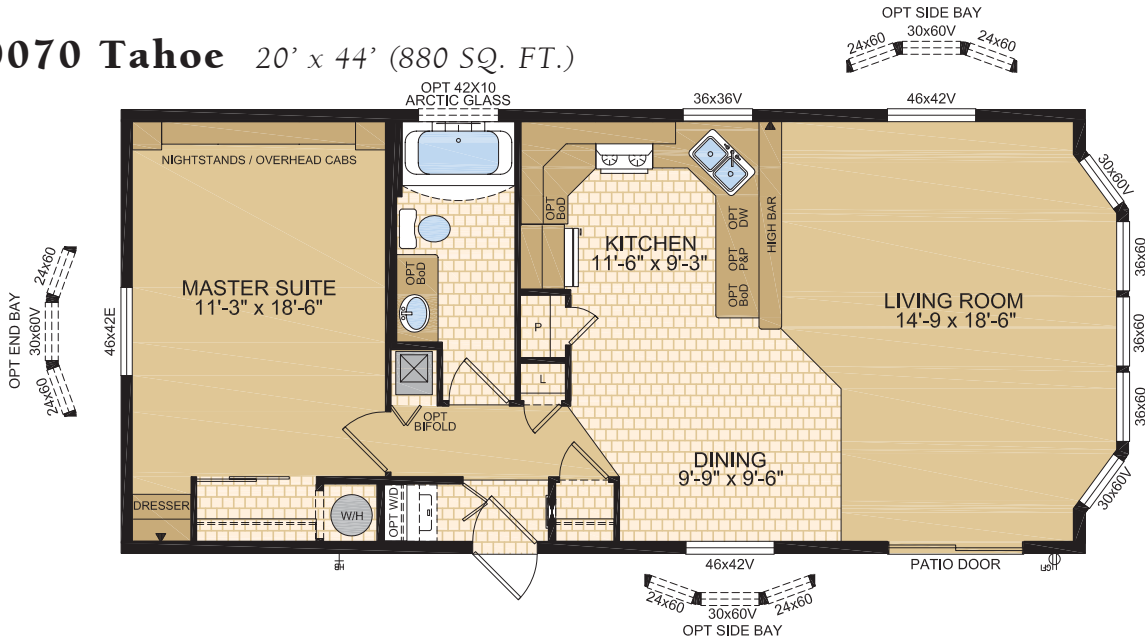
16132 LaRonge 16' x 48' (768 SQ. FT.)



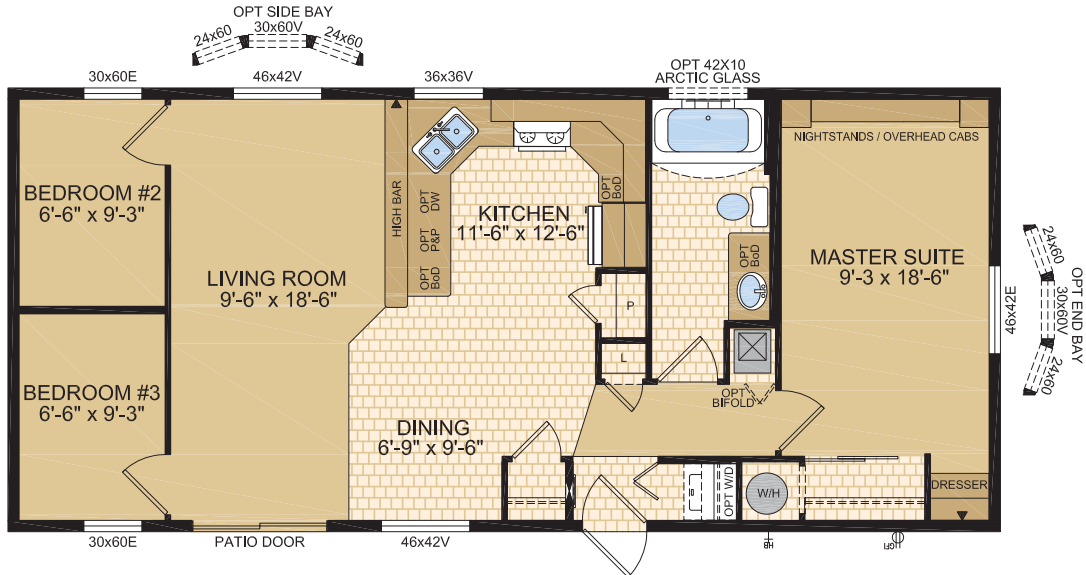
16133 Agassiz 16' x 56' (896 SQ. FT.) incl. covered porch



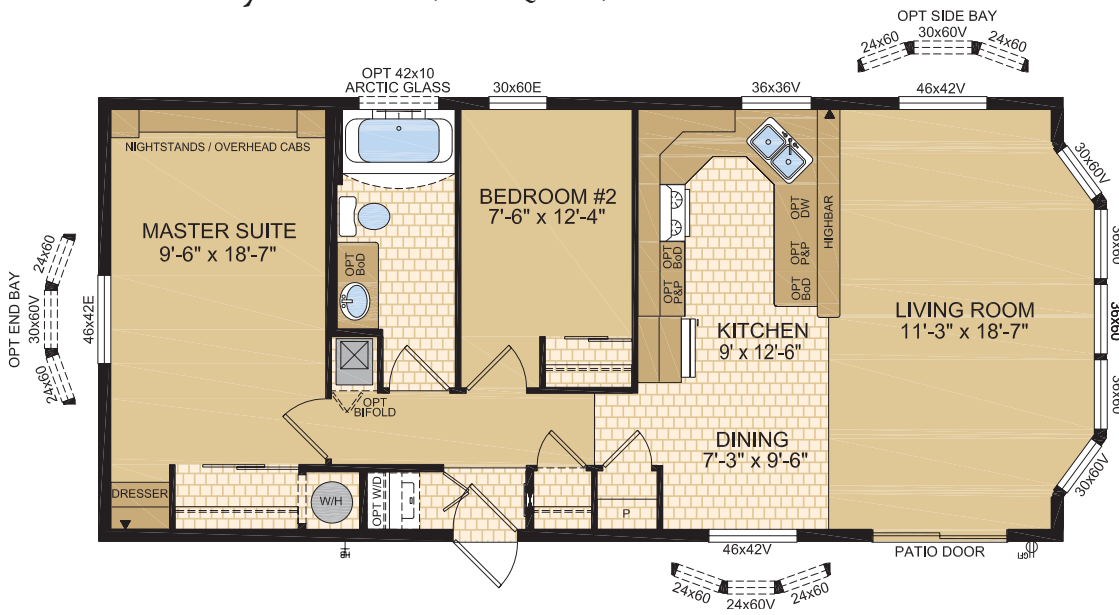
20070 Tahoe 20' x 44' (880 SQ. FT.)



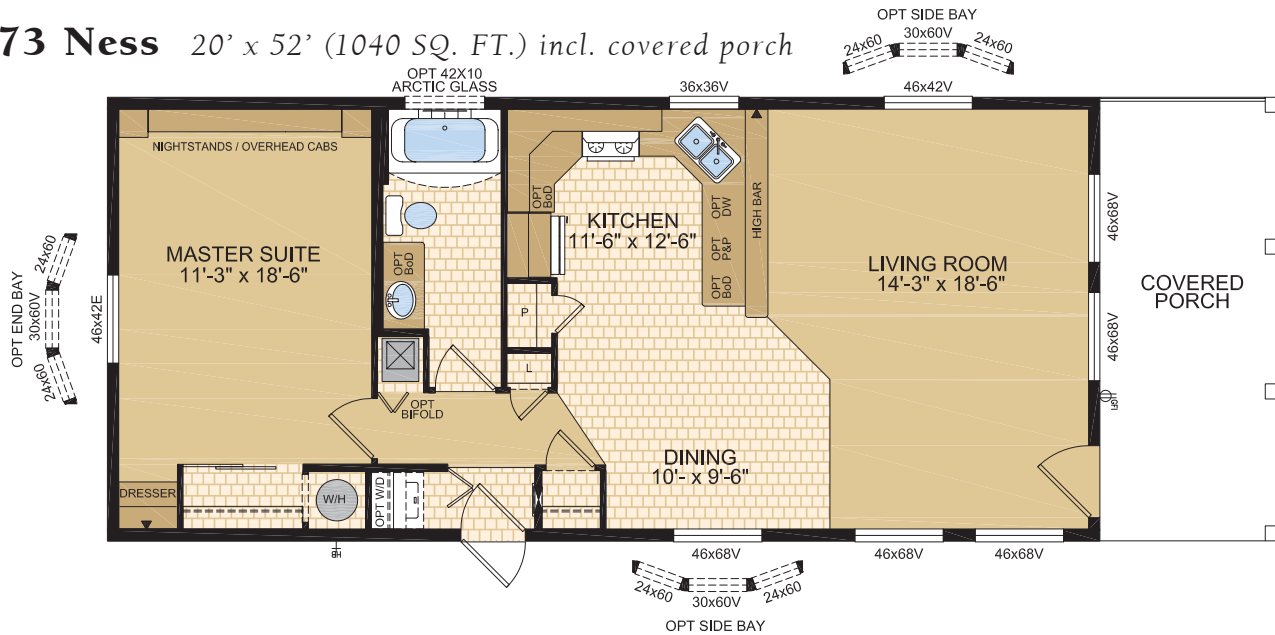
20071 Kirkland 20' x 44' (880 SQ. FT.)



20072 Kootenay 20' x 44' (880 SQ. FT.)



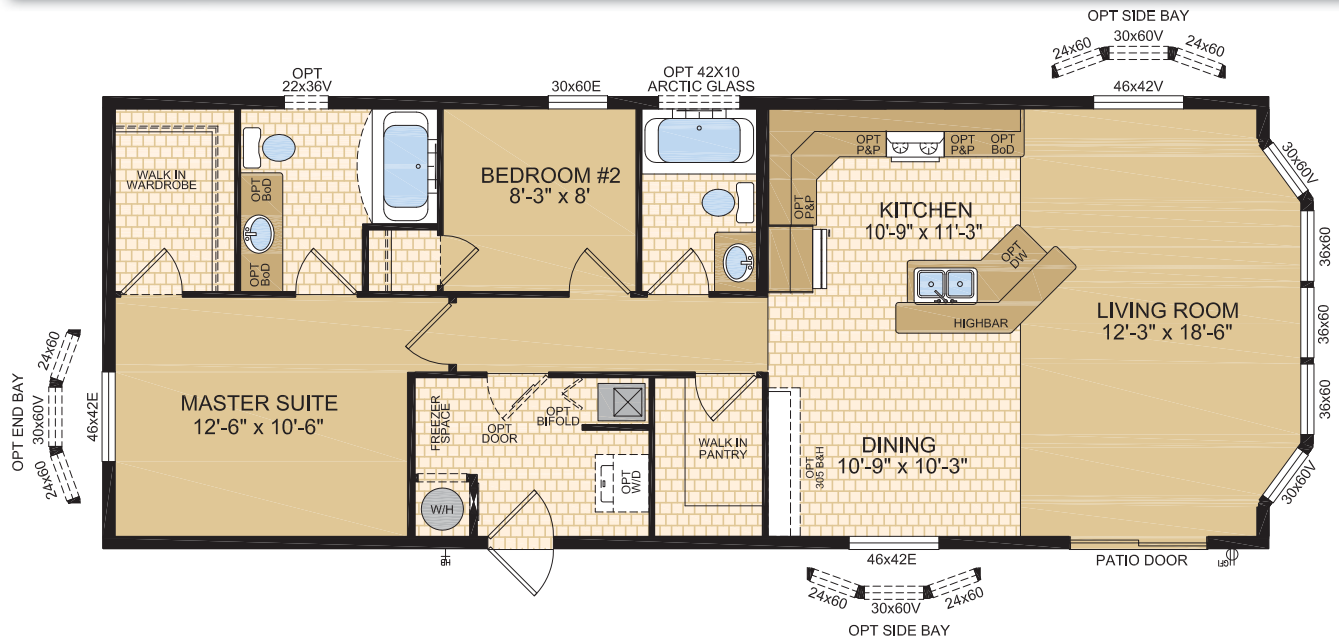
20073 Ness 20' x 52' (1040 SQ. FT.) incl. covered porch



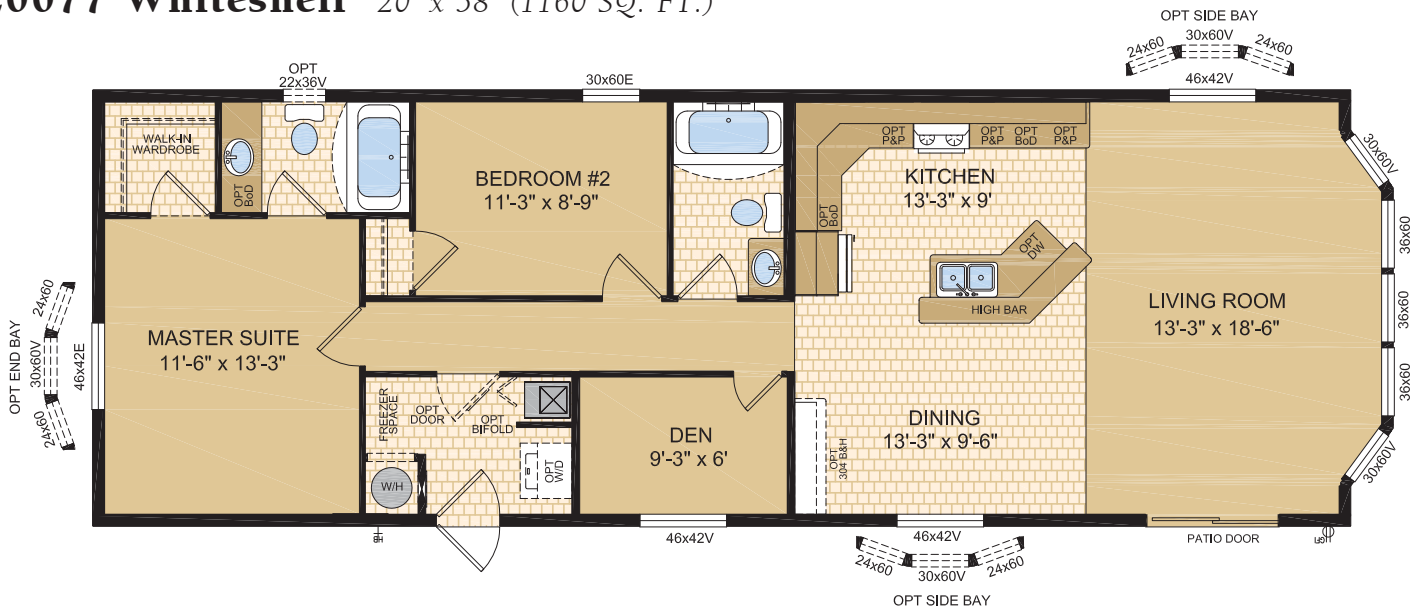
20074 Harrison 20' x 52' (1040 SQ. FT.) incl. covered porch



20076 Mara 20' x 52' (1040 SQ. FT.)

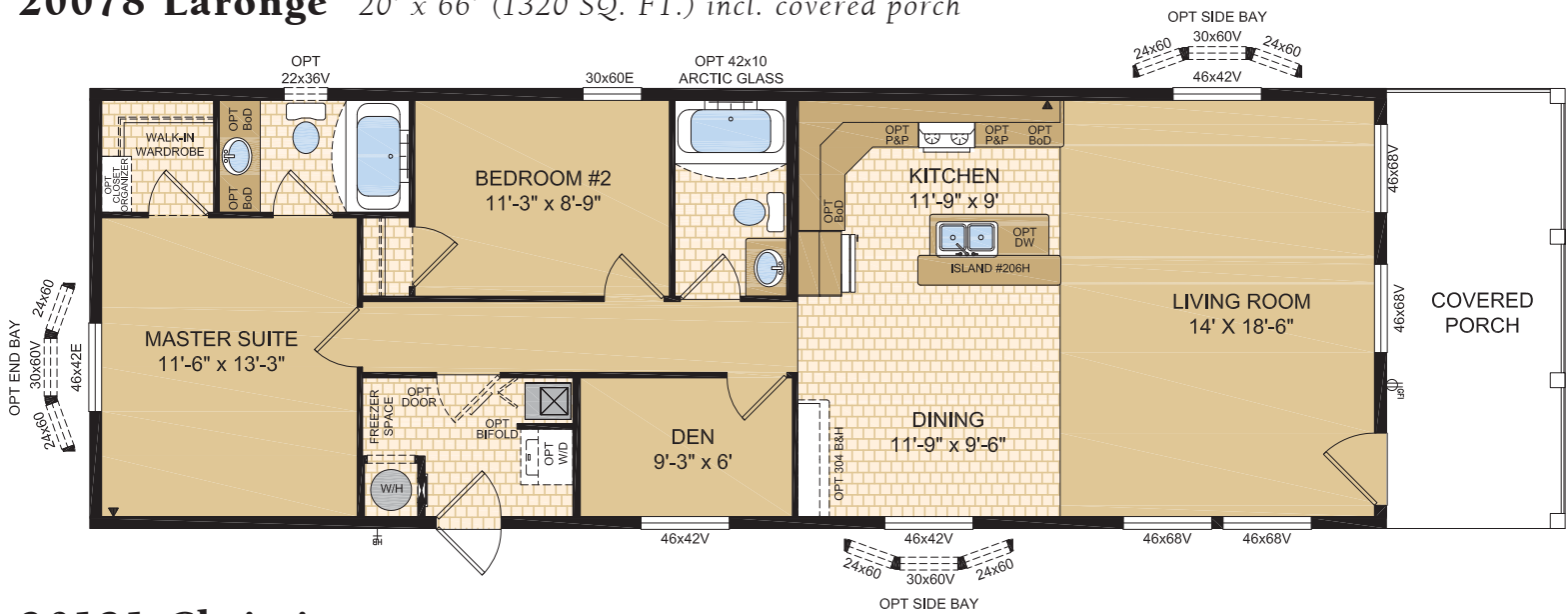


20077 Whiteshell 20' x 58' (1160 SQ. FT.)

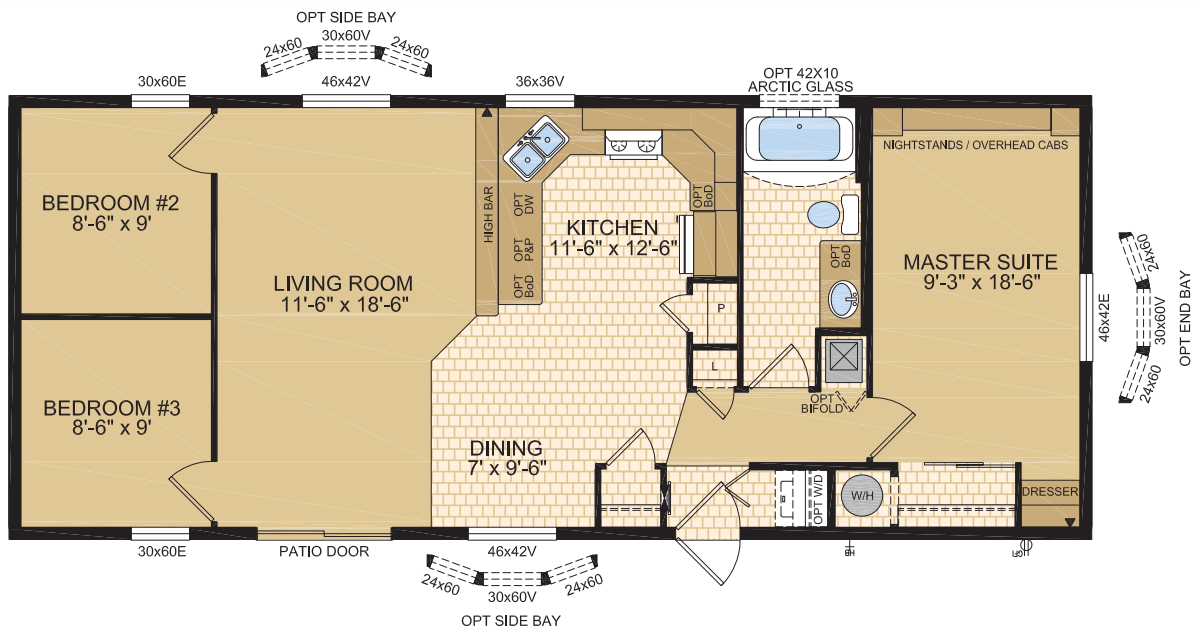


20078 Laronge 20' x 66' (1320 SQ. FT.) incl. covered porch

Note: rendering shown on coverpage



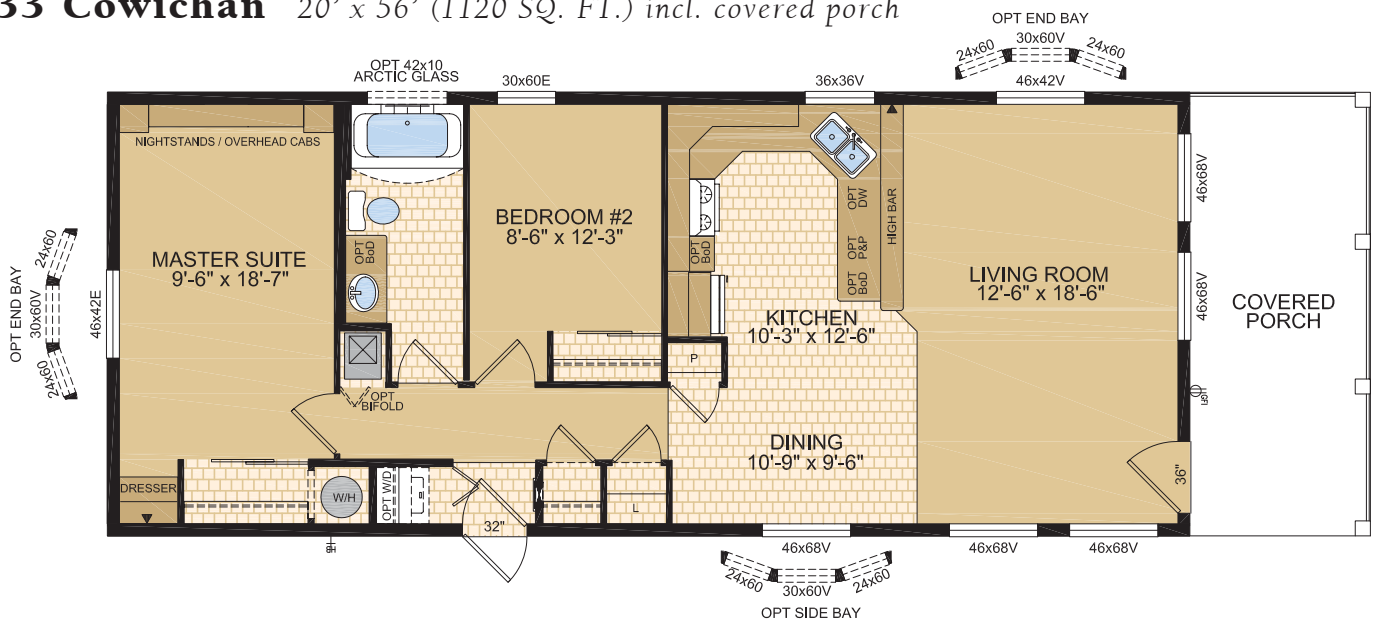
20131 Christina 20' x 48' (960 SQ. FT.)



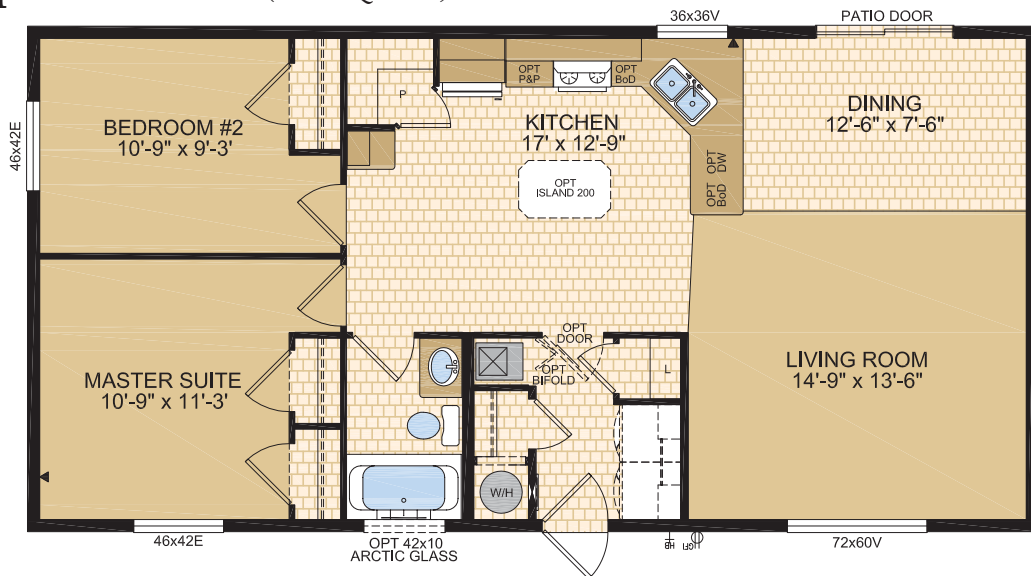
20132 Chaparrel 20' x 48' (960 SQ. FT.)



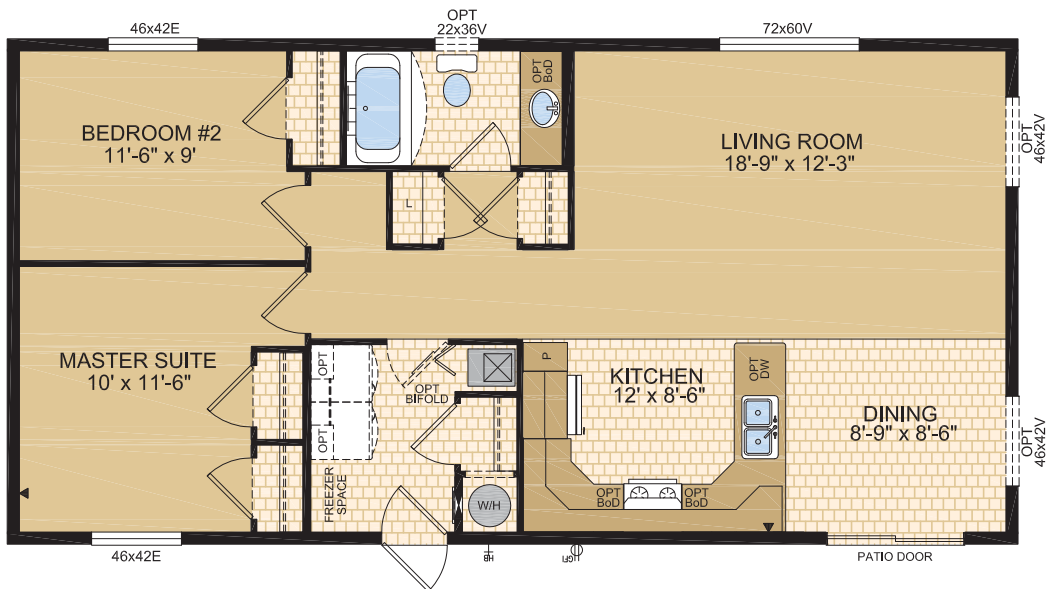
20133 Cowichan 20' x 56' (1120 SQ. FT.) incl. covered porch



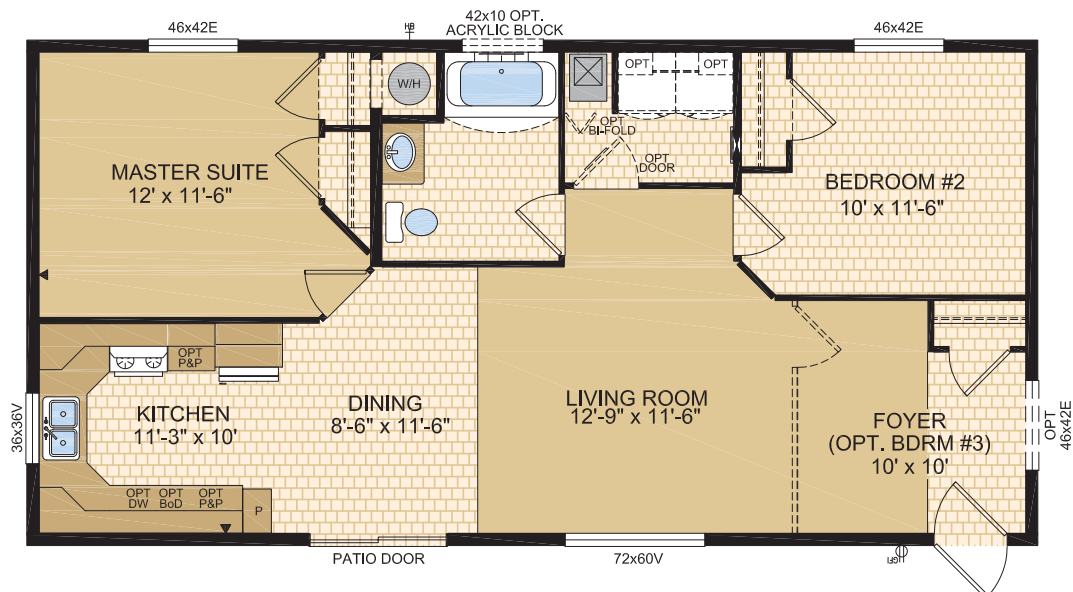
22250 Cypress 22' x 44' (968 SQ. FT.)



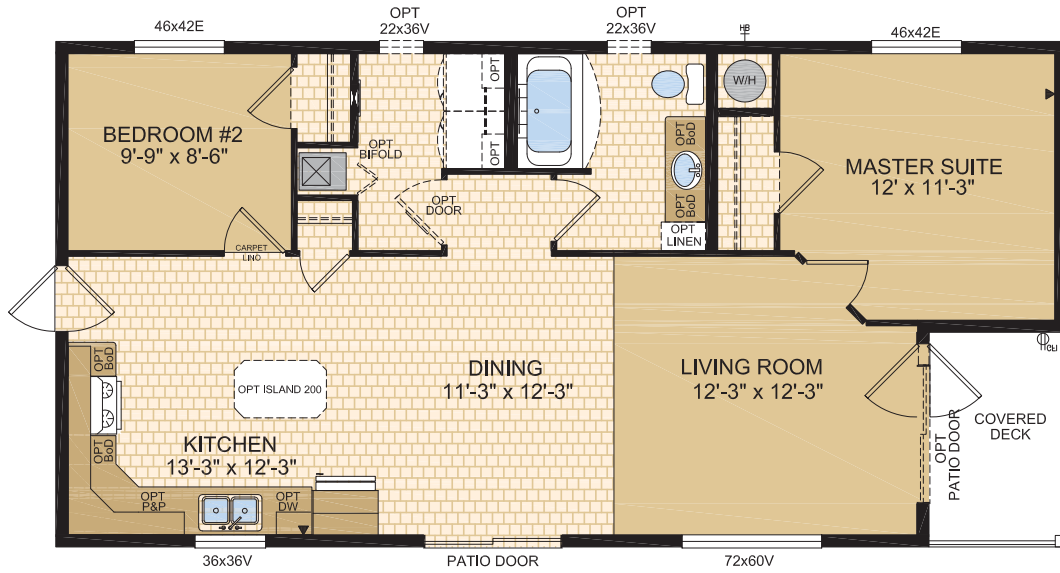
22251 Kenosee 22' x 44' (968 SQ. FT.)



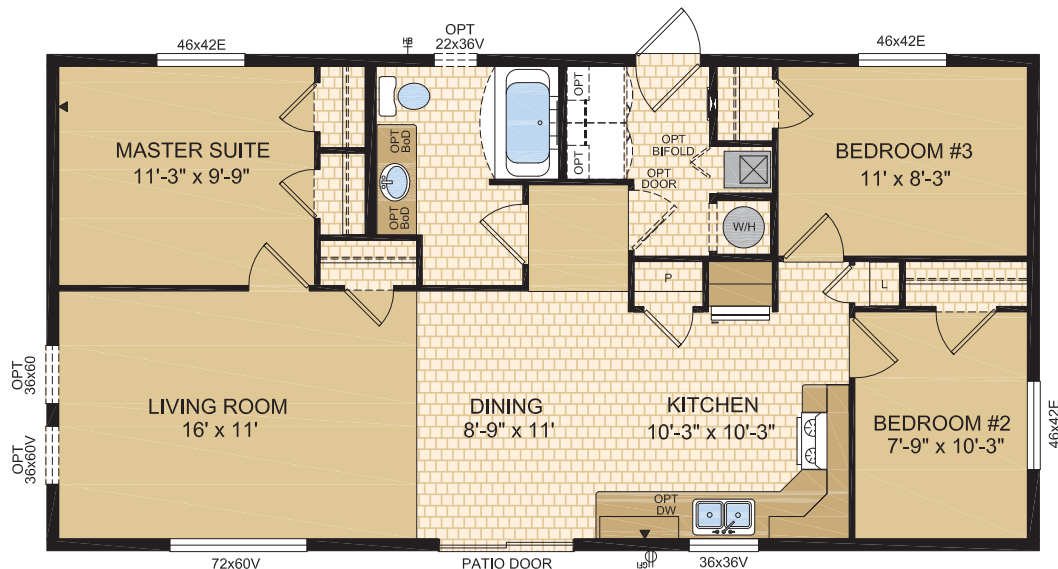
22252 Waskesui 22' x 44' (968 SQ. FT.)



22253 Capilano 22' x 44' (968 SQ. FT.) incl. covered deck



22254 Churchill 22' x 44' (968 SQ. FT.)



STANDARD FEATURES & SPECIFICATIONS

DISTINCTIVE FEATURES

- Built to the A-277 code
- 8' Ceilings
- Front living room models come with Bay window
- Front porch models come with 9-lite front door and transom windows in the living room and dining room
- Cathedral ceiling throughout
- Cathedral cove moulding throughout
- Décor switches and receptacles
- 12" side, 18" front vented eaves (*does not include rear*)
- Residential-type appliances and bathroom fixtures
- Deluxe bedroom nightstand/cabinets (*select models*)
- Serenity air conditioned ready furnace (*split system*)

GENERAL CONSTRUCTION

- 2" x 10" Floor Joist at 16" o.c. (2" x 8" on 14' wides)
- Exterior walls built 2"x6" and strengthened with 3/8" OSB sheathing on inside and outside of wall
- 6 mil Interior vapour barrier
- Floor decking, 5/8" T&G OSB, glued & screwed
- 3/8" Exterior O.S.B. sheathing
- 7/16" Roof sheathing
- Architectural asphalt shingle roof (*limited lifetime warranty*)
- Engineered roof trusses:
 - 5.65/12 roof pitch on 14' wide models
 - 5/12 roof pitch on 16' wide models
 - 4/12 roof pitch on 20' & 22' wide models
- Heavy tubular steel frame
- Maintenance free vinyl lap siding with metal fascia
- Residential Low E Argon filled (R-5) PVC vinyl windows
- Residential vinyl patio door with lock (*most models*)
- Coach lights at all exterior entrances
- Screen doors at rear exterior door
- Exterior GFI receptacle
- Exterior frost free tap
- Insulation meets zone requirements as per 9.36 Energy Code
- All others: Floors R-20, Walls R-20 & Ceiling R-40 (*min.*)
- Textured (*primed*) gyproc ceiling

TASTEFUL INTERIORS

- Plush saxony carpet in Living Room, all bedrooms and hall
- Quality cushioned linoleum flooring in all other areas
- Coordinating window valance over 2" white faux wood blinds (*inset in window*) in all areas except bathrooms

BRIGHT, BEAUTIFUL KITCHENS

- Deluxe tile backsplash
- Pantry – select models
- 19 cu ft 2-Door frost free refrigerator
- 30" Easy clean electric range
- Exterior vented range hood with light
- Double stainless steel sink
- Dowelled full modular cabinetry w/crown moulding
- Three distinctive colors of cabinet doors to choose from with matching molding and trim colours

SPACIOUS BATHS

- Deluxe tile backsplash
- One piece quality fiberglass tub and shower unit with single lever
- Curved Shower rods in all tubs
- Power bath fan on separate switch
- Theatrical lights
- Residential type toilet and sink
- GFI receptacle

UTILITY SERVICES

- High efficiency (90+AFUE) gas furnace with condensation pump
- 33 Imp. (40 US) Gallon electric hot water tank
- 100 Amp electrical service
- GFI protected receptacle for heat tape
- Primary exhaust fan c/w dehumidistat & switch
- CO2/Smoke detector(s) c/w battery backup
- Two communication outlets (LR & MBR)



Phone: (403) 527-1555 1421 Brier Park Crescent, Medicine Hat, Alberta T1C 1T8 Fax: (403) 528-4486

In a continued effort to meet the challenges of product improvement, we reserve the right to modify plans, specifications and features without prior notice.
Some homes may show optional items which are not standard. Please consult your dealer representative for details. Square footage and room sizes are approximate.

Printed in Canada. 2000/04/18